

# STENOX®



# 2026 Product Catalog

# PAINT & METAL SELECTION

Backed By Senox's 50 Year Paint Warranty

## TRADITIONAL PAINTED ALUMINUM

Factory Baked Finish • Flexible for Roll Forming • Exterior Durability



001 - 30° White



002 - Royal Brown



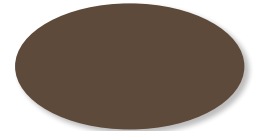
003 - Antique Ivory



004 - Black



005 - Raffia Beige



006 - Beaver Brown



007 - Classic Cream



008 - Clay



009 - Colonial Blue



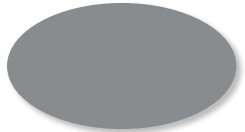
010 - Sherwood Green



011 - Musket Brown



013 - Wicker



014 - Dove Gray



015 - Almond



017 - Linen



018 - Light Bronze



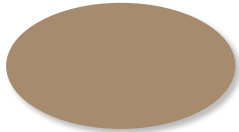
019 - Tuxedo Gray



020 - Heritage Cream



021 - Colonial Gray



022 - Buckskin Brown



023 - 80° White



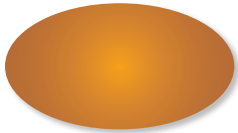
024 - Colonial Red



025 - Dark Bronze



026 - Herringbone



027 - Copper Metallic



028 - Paint Grip Metallic

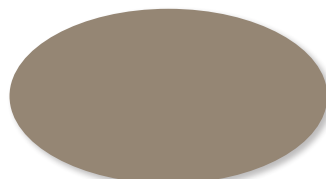
\*Colors shown may vary from actual material\*

## ArmerTOUGH PAINTED ALUMINUM

Exclusive Product • Abrasion Resistant • Reduces Appearance of Staining



130 - Satin White



131 - Wood Beige



132 - Cameo

## DuelTone® PAINTED ALUMINUM

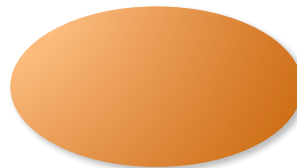
Created Through a Specialized Two-Coat Process  
High Performance Exterior Finish



129 - Rustic Copper

## PREMIUM METALS

3/4 Hard 16 oz. Copper  
Galvalume Plus Steel



890 - Solid Copper



920 - Galvalume Plus Steel

**ShadowBAK**  
wash coat®  
Non-Reflective Disappearing Wash Coat

### Found on the Interior of Senox Painted Aluminum Gutters

ShadowBAK® is a washcoat specially formulated by Senox that gives the inside of the gutter a non-reflective finish. The anodized bronze appearance provides the vanishing properties of a black shadow and erases the transition lines from the gutter to the roof.

# TABLE OF CONTENTS

---

<b>BRANCH LOCATIONS</b> Senox Branches	<b>p.3</b>	<b>FASTENERS</b> Rivets #42 x 1/8" #8 Screws Senox SpeedMaster™ Screws Nails, Drive Pins, & Anchors	<b>p.19</b>
<b>COIL</b> Seamless Gutter Coil	<b>p.4</b>	<b>PAINT &amp; SEALANT</b> Touch-Up Paint Sealant - Nitrile Rubber Base Sealant - Tripolymer Base Sealant - SBR Rubber Base	<b>p.20</b>
<b>GUTTER</b> End Caps for K-Style Miters for K-Style  Outlets for Flat Bottom Gutter Black MAX® Punch Paks for Flat Bottom Gutter Black MAX® Mini Punch Paks for Flat Bottom Gutter Black MAX® Punch Replacement Accessories	<b>p.4</b>  <b>p.5</b>	<b>TOOLS</b> Aviation Snips Offset Snips Regular Pattern Snips Straight Snips Circular "Duckbill" Snips Combination Snips End Cap Crimpers	<b>p.21</b>
Flashing 16 oz. Solid Copper Flat Sheets Gutter Bumpers for K-Style	<b>p.6</b>	Downspout Crimpers Hand Seamers Drivers, Leveling & Caulking	<b>p.22</b>
<b>DOWNSPOUT</b> Rectangular Downspouts Rectangular Elbows Rectangular Offsets  3X4 Smooth Downspouts 3X4 Smooth Elbows  Round Downspouts Round Elbows Round Offsets  Downspout Accessories Downspout Hangers	<b>p.7</b>  <b>p.8</b>  <b>p.9</b>  <b>p.10</b>	Cutting & Drilling Ladder Accessories Miscellaneous Accessories Joints	<b>p.23</b>
<b>K-STYLE HANGERS</b> K-Style Internal Hangers	<b>p.11</b>	<b>RAIN CHAINS</b> Rain Chains	<b>p.24</b>
<b>HALF ROUND GUTTER</b> Reverse Bead Half Round Internal Hangers Half Round External Hangers  Reverse Bead Half Round Gutter Sections End Caps for Half Round Miters for Half Round Outlets for Half Round Black MAX® Mini Punch Pak for Half Round Gutter Wedges for Reverse Bead Half Round	<b>p.14</b>  <b>p.15</b>	<b>CONDUCTOR HEADS</b> Conductor Heads	<b>p.25</b>
<b>GUTTER GUARDS</b> Aluminum Expanded Wire Gutter Guard Powder Coated Expanded Wire Gutter Guard Perforated Gutter Guard  Stainless Steel Metal Mesh Gutter Guard Louvered Gutter Guard Solid Gutter Guard	<b>p.16</b>  <b>p.17</b>	<b>GUTTER MACHINES</b> Complete Boxer GutterSystem 6" Boxer Machines Downspouts & Elbows (for Boxer)  Endcaps (for Boxer) AqueDUCT® Screen hangers (for Boxer) AqueDUCT® Miters (for Boxer) BearCLAW® Hangers (for Boxer) BearCLAW® Gutter Guard (for Boxer)  6.5" Half Round Wedger Gutter Machines AqueDUCT® Screen hangers (for HR) AqueDUCT® Miters (for HR) BearCLAW® Hangers (for HR) BearCLAW® Gutter Guard (for HR)  Barracuda® Gutter Machines Barracuda® Gutter Machine Options	<b>p.26</b>  <b>p.27</b>  <b>p.28</b>  <b>p.29</b>
<b>DRAINAGE</b> Splash blocks FLEX-Drain® Underground Drainage & Adaptors Universal Drainage & Adaptors	<b>p.18</b>	<b>INDEX</b>	<b>p.31</b>
		<b>JOB ESTIMATE FORM</b>	<b>p.32</b>



Serving the Seamless Gutter Industry Since 1972

### **LARGEST INVENTORY IN-STOCK**

- Complete 5" & 6" K-Style and 6" Half Round product lines
- Dependable order fulfillment & delivery

### **COMPREHENSIVE COLOR SELECTION**

- 26 Painted aluminum colors, galvalume plus steel, & solid copper
- 3 Exclusive Armor Tough® painted aluminum colors
- Exclusive Duel Tone painted aluminum color
- All backed by Senox's 50 year paint warranty

### **GUTTER ACCESSORIES**

- Hidden hangers and half round internal & external hangers
- Outlets, offsets, miters, conductor heads, & more

### **HIGHEST QUALITY PRODUCTS**

- State-of-the-art manufacturing equipment ensures products are of the highest quality
- Senox manufactured products are made in North America

### **SUPERIOR PACKAGING**

- High grade cardboard used for all boxes
- Packaging specific to each product, no excess space for product to shift
- Boxes are sealed using staples vs. tape

### **GUTTER MACHINES**

- Comprehensive gutter machine service
- 3 Year parts & 1 year electrical warranty on all Senox gutter machines

*"We service the seamless gutter industry. That's all we do. If it has to do with gutters, we're either doing it, thinking about doing it, or planning to do it. We're thinking about gutters all the time."*

—A.B. Walters  
Founder



# SENOX BRANCH LOCATIONS

## E-COMMERCE

www.SenoxOnline.com  
Ph: 800-722-6958  
Fax: 888-804-4035

## AUSTIN

12112 Boardwalk Dr. Ste B  
Austin, TX 78729  
Ph: 512-582-1331  
Fax: 512-582-1333  
Rep: Mike Morales  
512-673-0921

## CORPUS CHRISTI

2334 Pollex Ave  
Corpus Christi, TX 78415  
Ph: 361-270-0045  
Rep: Sal Garza  
713-823-9289

## DALLAS

3236 Garden Brook St.  
Farmers Branch, TX 75234  
Ph: 972-243-7272  
Fax: 972-243-7273  
Rep: Jeremiah Locke  
972-213-6843

## FORT WORTH

5204-D Airport Fwy.  
Fort Worth, TX 76117  
Ph: 817-831-4900  
Fax: 817-831-4901  
Rep: Jeremiah Locke  
972-213-6843

## GARLAND

3301 Wood Dr Ste 400  
Garland, TX 75041  
Ph: 469-573-2233  
Fax: 469-573-2204  
Rep: Jeremiah Locke  
972-213-6843

## HOUSTON CENTRAL

4466 W 12th St.  
Houston, TX 77055  
Ph: 713-316-9802  
Fax: 713-316-9807  
Rep: Sal Garza  
713-823-9289

## HOUSTON NORTH

11103 Bellline Rd. #100  
Houston, TX 77067  
Ph: 281-443-0420  
Fax: 281-443-0490  
Rep: Sal Garza  
713-823-9289

## LONGVIEW

413 S. Eastman Rd.  
Longview, TX 75602  
Ph: 903-295-9555  
Fax: 903-295-9797  
Rep: Rick Coffelt  
972-896-6834

## LUBBOCK

8911 County Rd 6830  
Lubbock, TX 79407  
Ph: 806-516-1079  
Rep: Troy Rose  
239-990-7002

## OKLAHOMA CITY

1340 Metropolitan Ave.  
Oklahoma City, OK 73108  
Ph: 405-948-7464  
Fax: 405-948-6287  
Rep: Rick Coffelt  
972-896-6834

## SAN ANTONIO

3816 Binz-Engelman Rd.  
B-111  
San Antonio, TX 78218  
Ph: 210-514-1173  
Fax: 210-514-1175  
Rep: Michael Ponce  
210-906-1230

## CHATTANOOGA

3475-C 8th Ave.  
Chattanooga, TN 37407  
Ph: 423-698-0050  
Fax: 423-698-3146  
Rep: Jason Harris  
423-443-7814

## FULTON

555-C Wharton Circle  
Atlanta, GA 30336  
Ph: 404-691-9400  
Fax: 404-691-0094  
Rep: Sam Henley  
404-423-1928

## KENNESAW

3690 Kennesaw S. Ind. Dr.  
Kennesaw, GA 30144  
Ph: 770-795-8500  
Fax: 770-795-9991  
Rep: Sam Henley  
404-423-1928

## NASHVILLE

302 Space Park Dr. S.  
Nashville, TN 37211  
Ph: 615-333-3383  
Fax: 615-333-3374  
Rep: Rob Vail  
615-653-6941

## SUWANEE

2970 Shawnee Ridge Ct.  
#200  
Suwanee, GA 30024  
Ph: 770-476-4141  
Fax: 770-476-4175  
Rep: Sam Henley  
404-423-1928

## TUCKER

4662 North Royal Atlanta Dr.  
Tucker, GA 30084  
Ph: 404-292-6181  
Fax: 404-292-6521  
Rep: Sam Henley  
404-423-1928

## DEERFIELD BEACH

740 S Powerline Rd. Ste H  
Deerfield Beach, FL 33442  
Ph: 954-418-7003  
Rep: Troy Rose  
239-990-7002

## FORT MYERS

6361 Topaz Court  
Fort Meyers, FL 33966  
Ph: 239-217-6303  
Fax: 239-217-3513  
Rep: Troy Rose  
239-990-7002

## JACKSONVILLE

6858 Phillips Parkway Dr. S.  
Jacksonville, FL 32256  
Ph: 904-880-2192  
Fax: 904-880-7256  
Rep: John Perez  
813-734-4428

## ORLANDO

7473 Presidents Dr.  
Orlando, Florida 32809  
Ph: 407-734-2148  
Fax: 407-369-4229  
Rep: John Perez  
813-734-4428

## PENSACOLA

3855 N Palafox St  
Pensacola, FL 32505  
Ph: 850-701-8192  
Fax: 850-303-2682  
Rep: Troy Rose  
239-990-7002

## TAMPA

201-C Kelsey Ln.  
Tampa, Florida 33619  
Ph: 813-623-6178  
Fax: 813-626-1306  
Rep: John Perez  
813-734-4428

## CHARLOTTE

3500 Woodpark Blvd Ste G  
Charlotte, NC 28206  
Ph: 704-371-5043  
Fax: 704-371-5077  
Rep: Rob Vail  
615-653-6941

# SENOX®

**SEAMLESS GUTTER COIL**

Senox seamless gutter coil is available in painted aluminum (all 26 traditional Senox colors), copper, or galvalume+ (all painted coil comes backed by our 50 year paint warranty.)

**11 7/8"**  
 .027" Aluminum  
 part # 1111950XXX

**15"**  
 .027" Aluminum  
 part # 1115050XXX

Available in: 26 Traditional, 1 Duel Tone®, 3 Armor Tough®

**11 7/8"**  
 .032" Aluminum  
 part # 11119710XXX

**15"**  
 .032" Aluminum  
 part # 11150710XXX

Available in: 26 Traditional, 1 Duel Tone®, 3 Armor Tough®

**11 7/8"**  
 16 oz. Solid Copper  
 part # 1111951890

**15"**  
 16 oz. Solid Copper  
 part # 1115051890

Galvalume Plus Steel  
 part # 1111950920

Galvalume Plus Steel  
 part # 1115050920

**18"**  
 .032" Aluminum  
 part # 11180710XXX

**18"**  
 16 oz. Solid Copper  
 part # 1118051890

Galvalume Plus Steel  
 part # 1118050920



**END CAPS FOR K-STYLE**

Packaged 25R/25L Pcs/Box

Senox end caps provide a tap on fit to easily close the ends of the gutter; uses painted Senox coil to ensure a perfect match every time.

**5" Right or Left**  
 right - part # 2215030XXX  
 left - part # 2215050XXX

**6" Right or Left**  
 right - part # 2216030XXX  
 left - part # 2216050XXX

**7" Right or Left**  
 right - part # 2217030XXX  
 left - part # 2217050XXX

Available in: 26 Traditional, 1 Duel Tone® (129), 3 Armor Tough®, 16 oz. Solid Copper (890), Galvalume Plus Steel (920)



**MITERS FOR K-STYLE**

Packaged 20 pcs/Box

The fastest way to install corners, and available in the full range of Senox colors to perfectly match Senox gutters.

**5", 90°, Strip, O/S or I/S**  
 O/S - part # 2315110XXX  
 I/S - part # 2315130XXX

**6", 90°, Strip, O/S or I/S**  
 O/S - part # 2316110XXX  
 I/S - part # 2316130XXX

**7", 90°, Strip, O/S or I/S**  
 O/S - part # 2317110XXX  
 I/S - part # 2317130XXX

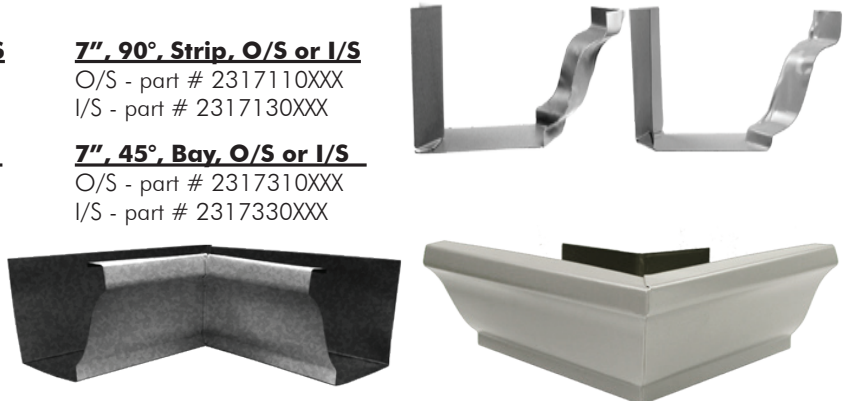
**5", 45°, Bay, O/S or I/S**  
 O/S - part # 2315310XXX  
 I/S - part # 2315330XXX

**6", 45°, Bay, O/S or I/S**  
 O/S - part # 2316310XXX  
 I/S - part # 2316330XXX

**7", 45°, Bay, O/S or I/S**  
 O/S - part # 2317310XXX  
 I/S - part # 2317330XXX

**5", 90°, Box, O/S or I/S**  
 O/S - part # 2315610XXX  
 I/S - part # 2315630XXX

**6", 90°, Box, O/S or I/S**  
 O/S - part # 2316610XXX  
 I/S - part # 2316630XXX



Available in: 26 Traditional, 1 Duel Tone®, 3 Armor Tough®, 16 oz. Solid Copper (890), Galvalume Plus Steel (920)

**COLOR SELECTION**

**Traditional Painted Aluminum**

- 001 30° White
- 002 Royal Brown
- 003 Antique Ivory
- 004 Black
- 005 Raffia Beige
- 006 Beaver Brown
- 007 Classic Cream
- 008 Clay
- 009 Colonial Blue
- 010 Sherwood Green
- 011 Musket Brown
- 013 Wicker
- 014 Dove Gray
- 015 Almond
- 017 Linen
- 018 Light Bronze
- 019 Tuxedo Gray
- 020 Heritage Cream

- 021 Colonial Gray
- 022 Buckskin Brown
- 023 80° White
- 024 Colonial Red
- 025 Dark Bronze
- 026 Herringbone
- 027 Copper Metallic
- 028 Paint Grip Metallic

**Duel Tone® Painted Aluminum**

- 129 Rustic Copper

**Armor Tough® Painted Aluminum**

- 130 Satin White
- 131 Wood Beige
- 132 Cameo

**Metal Selection**

- 099 Mill Finish Aluminum
- 870 Brass
- 890 Solid Copper
- 910 Galvanized Steel
- 920 Galvalume Plus Steel

## OUTLETS FOR FLAT BOTTOM GUTTER

Senox outlets include an exclusive dimple for easy 'pop in' installation when used in tandem with our outlet punch- helps provide a snug fit when installing the outlet in the bottom of the gutter.

**2 3/8" Round**  
250 pcs/box  
part # 2612110004



Available in: Black (004)

**2 3/4" Round**  
250 pcs/box  
part # 2613110004



Available in: Black (004)

**3" Oval**  
100 pcs/box  
part # 263311XXXX



**4" Oval**  
50 pcs/box  
part # 263411XXXX



Available in: Black (004), Solid Copper (890), Galvanized Steel (910)

**2" x 3" Rectangle**  
100 pcs/box  
part # 2643110004



Available in: Black (004)

**3" x 4" Rectangle**  
50 pcs/box  
part # 2644120004



Available in: Black (004)

**4" x 5" Rectangle**  
50 pcs/box  
part # 2645140XXX



Available in: Aluminum (099), Solid Copper (890), Galvanized Steel (910)

## BLACK MAX® PUNCH PAKS FOR FLAT BOTTOM GUTTER

Everything you need to install the best gutter outlets anywhere; the Punch Pak includes Punch, 1 1/2" Hole Saw, 1/4" Driver Power Bit, and outlets- all for the same price as just ordering the outlets by themselves!

**2 3/8" Round**  
750 Outlets  
part # 2612119004

**2 3/4" Round**  
750 Outlets  
part # 2613119004

**2" x 3" Rectangle**  
900 Outlets  
part # 2643119004

**3" Oval**  
900 Outlets  
part # 2633119004

**4" Oval**  
450 Outlets  
part # 2634119004

**3" x 4" Rectangle**  
450 pcs/box  
part # 2644129004

Includes: Punch, 1 1/2" Hole Saw, 1/4" Driver Power Bit, Outlets



## BLACK MAX® MINI PUNCH PAKS FOR FLAT BOTTOM GUTTER

If you're just doing a job or two and don't need as many outlets as our standard Punch Pak, you need the Mini Punch Pak. Includes Punch, 1 1/2" Hole Saw, 1/4" Driver Power Bit, and outlets.

**2 3/8" Round**  
35 Outlets  
part # 2612118004

**2 3/4" Round**  
35 Outlets  
part # 2613118004

**2" x 3" Rectangle**  
100 Outlets  
part # 2643118004

**3" Oval**  
100 Outlets  
part # 2633118004

**4" Oval**  
50 Outlets  
part # 2634118004

**3" x 4" Rectangle**  
50 pcs/box  
part # 2644128004

Includes: Punch, 1 1/2" Hole Saw, 1/4" Driver Power Bit, Outlets



## BLACK MAX® PUNCH REPLACEMENT ACCESSORIES

**Hole Saw 1 1/2", for Punch**  
part # 8926928



**Driver Bit 1/4", for Punch**  
part # 8950812



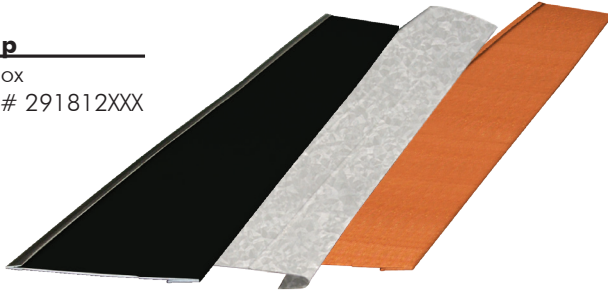
**FLASHING**

*No fasteners needed; Senox Drip Caps help keep water from running behind the gutter, protecting your customer's roof.*

*Senox Drip Edges have the largest color selection in the marketplace today- available in all Senox colors.*

**Drip Cap**

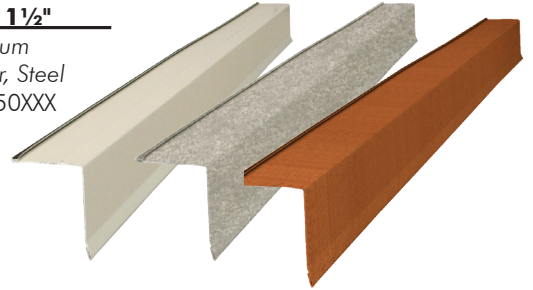
30 pcs/box  
4' - part # 291812XXX



Available in: Black (004), 16 oz. Solid Copper (890), Galvalume Plus Steel (920)

**Drip Edge, 1 1/2" x 1 1/2"**

30 pcs/box - Aluminum  
15 pcs/box - Copper, Steel  
10' - part # 2910150XXX



Available in: 26 Traditional, 1 Duel Tone®(129), 3 Armor Tough®, 16 oz. Solid Copper (890), Galvalume Plus Steel (920)

**16 OZ. SOLID COPPER FLAT SHEETS**

**3' x 10'**

36 pcs/pallet  
part # 133655890

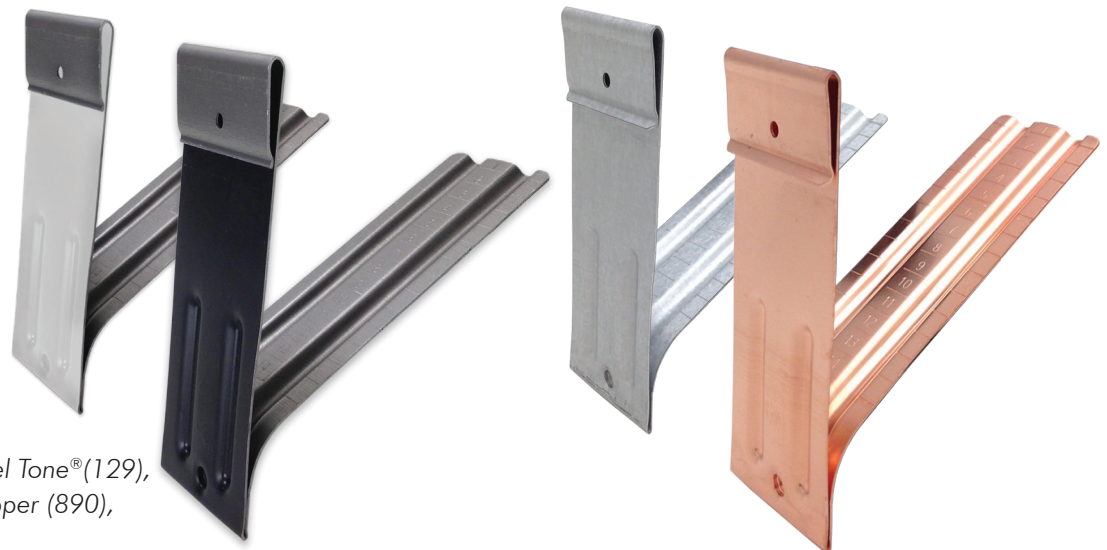


**GUTTER BUMPERS FOR K-STYLE**

*Compared to traditional gutter wedges, Senox Gutter Bumpers are faster & more cost effective- and with premarked lines, cutting accurately is easier than ever. All our bumpers feature ribs to provide extra strength and the SB bumper also fits 5", 6", & 7" K-Style gutters, unlike traditional wedges which you buy to size.*

**Gutter Bumper® SB**

100 pcs/box  
part # 2928150XXX



Available in: 26 Traditional, 1 Duel Tone®(129), 3 Armor Tough®, 16 oz. Solid Copper (890), Galvalume Plus Steel (920)

**For Straight Back Gutter**

## RECTANGULAR DOWNPOUTS

Senox rectangular downspouts feature side crimp instead of the usual corner crimp, which allows for a cleaner transition.

### 2" x 3" x 8'

10 pcs/box  
part # 4143240XXX

### 3" x 4" x 8'

10 pcs/box  
part # 4144240XXX

Available in: 26 Traditional, 1 Duel Tone®, 3 Armor Tough®

### 2" x 3" x 10'

10 pcs/box - Aluminum  
5 pcs/box - Copper & Steel  
part # 4143250XXX

### 3" x 4" x 10'

10 pcs/box - Aluminum  
5 pcs/box - Copper & Steel  
part # 4144250XXX

### 4" x 5" x 10'

6 pcs/box  
part # 4145250XXX

Available in: 26 Traditional, 1 Duel Tone® (129), 3 Armor Tough®, 16 oz. Solid Copper (890), Galvalume Plus Steel (920)



## RECTANGULAR ELBOWS

### 2" x 3", A or B, 75°

36 pcs/box  
A - part # 4243270XXX  
B - part # 4243770XXX

### 3" x 4", A or B, 75°

20 pcs/box  
A - part # 4244270XXX  
B - part # 4244770XXX

### 4" x 5", A or B, 75°

12 pcs/box  
A - part # 4245270XXX  
B - part # 4245770XXX

### 2" x 3", A, 22.5°

72 pcs/box  
part # 42432200XXX

### 3" x 4", A, 22.5°

40 pcs/box  
part # 42442200XXX

### 4" x 5", A, 22.5°

12 pcs/box  
part # 42452200XXX

### 2" x 3", A, 45°

42 pcs/box  
part # 42432400XXX

### 3" x 4", A, 45°

30 pcs/box  
part # 42442400XXX

### 4" x 5", A, 45°

12 pcs/box  
part # 42452400XXX

Available in: 26 Traditional, 1 Duel Tone® (129), 3 Armor Tough®, 16 oz. Solid Copper (890), Galvalume Plus Steel (920)



## RECTANGULAR OFFSETS

### 2" x 3" x 2"

24 pcs/box  
part # 4343220XXX

### 2" x 3" x 4"

24 pcs/box  
part # 4343240XXX

### 2" x 3" x 6"

24 pcs/box  
part # 4343260XXX

### 3" x 4" x 2"

15 pcs/box  
part # 4344220XXX

### 3" x 4" x 4"

15 pcs/box  
part # 4344240XXX

### 3" x 4" x 6"

15 pcs/box  
part # 4344260XXX

Available in: 26 Traditional, 1 Duel Tone® (129), 3 Armor Tough®, 16 oz. Solid Copper (890), Galvalume Plus Steel (920)



### \*MADE TO ORDER\*

If you need a less common bend, we've got you covered!  
Custom bend elbows are available upon request.

### 2" x 3", A or B, 90°

36 pcs/box  
A - part # 424329XXX  
B - part # 424379XXX

### 3" x 4", A or B, 90°

18 pcs/box  
A - part # 424429XXX  
B - part # 424479XXX

### 2" x 3", B, 45°

42 pcs/box  
part # 424374XXX

### 3" x 4", B, 45°

25 pcs/box  
part # 424474XXX



Available in: 26 Traditional, 1 Duel Tone® (129), 3 Armor Tough®, 16 oz. Solid Copper (890), Galvalume Plus Steel (920)

\*some conditions apply, talk to your Rep for more details

**3" X 4" SMOOTH DOWNPOUTS**

**Packaged 5 Pcs/Box**

*Available in every Senox color, Senox 3 x 4 smooth downspouts are the perfect compliment to our Boxer gutters (and offer a different option for K-Style gutters, too!)*

**10' Downspout**

5 pcs/box

All colors

Part # 413425xxx

Available in: 26 Traditional, 1 Duel Tone® (129), 3 Armor Tough®, 16 oz. Solid Copper (890), Galvalume Plus Steel (920)



**3" X 4" SMOOTH ELBOWS**

**22.5° 'A' Elbows**

25 pcs/box

All colors

Part # 423422XXX

Available in: 26 Traditional, 1 Duel Tone® (129), 3 Armor Tough®, 16 oz. Solid Copper (890), Galvalume Plus Steel (920)



**45° 'A' Elbows**

20 pcs/box

All colors

Part #423424XXX

Available in: 26 Traditional, 1 Duel Tone® (129), 3 Armor Tough®, 16 oz. Solid Copper (890), Galvalume Plus Steel (920)



**75° 'A' Elbows**

15 pcs/box

All colors

Part #4234270XXX

Available in: 26 Traditional, 1 Duel Tone® (129), 3 Armor Tough®, 16 oz. Solid Copper (890), Galvalume Plus Steel (920)



**75° 'B' Elbows**

15 pcs/box

All colors

Part #4234770XXX

Available in: 26 Traditional, 1 Duel Tone® (129), 3 Armor Tough®, 16 oz. Solid Copper (890), Galvalume Plus Steel (920)



## ROUND DOWNSPOUTS

**Packaged 5 Pcs/Box**

Available in every Senox color, Senox round downspouts are the perfect compliment to our Half Round gutters (and offer a different option for K-Style gutters, too!)

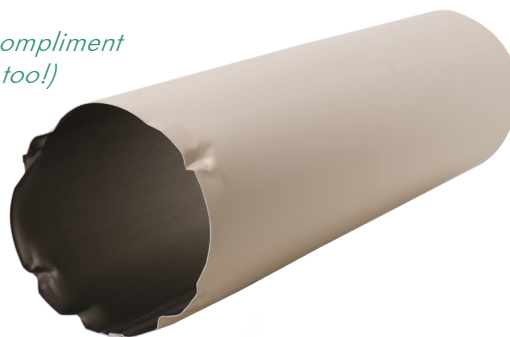
**3" x 10' Round**

5 pcs/box  
part # 4153250XXX

**4" x 10' Round**

5 pcs/box  
part # 4154250XXX

Available in: 26 Traditional, 1 Duel Tone® (129), 3 Armor Tough®, 16 oz. Solid Copper (890), Galvalume Plus (920)



## ROUND ELBOWS

**3" Round, 75°**

10 pcs/box  
part # 4253270XXX

**3" Round, 45°**

12 pcs/box  
part # 4253240XXX

**4" Round, 22.5°**

12 pcs/box  
part # 4254220XXX

**3" Round, 22.5°**

12 pcs/box  
part # 4253220XXX

**4" Round, 75°**

10 pcs/box  
part # 4254270XXX

**4" Round, 45°**

10 pcs/box  
part # 4254240XXX

Available in: 26 Traditional, 1 Duel Tone®, 3 Armor Tough®, 16 oz. Solid Copper, Galvalume Plus Steel



**22.5°**



**45°**



**75°**

**\*MADE TO ORDER\***

If you need a round elbow in a color not shown, we can do that! Custom round elbows are available upon request!\*

**3" Round, 90°**

8 pcs/box  
part # 4253290XXX

**4" Round, 90°**

8 pcs/box  
part # 4254290XXX

Available in: 26 Traditional, 1 Duel Tone® (129), 3 Armor Tough®, 16 oz. Solid Copper (890), Galvalume Plus Steel (920)

\*some conditions apply, talk to your Rep for more details

## ROUND OFFSETS

**3" Round x 2"**

6 pcs/box  
part # 4353220XXX

**3" Round x 4"**

6 pcs/box  
part # 4353240XXX

**3" Round x 6"**

4 pcs/box  
part # 4353260XXX

**4" Round x 2"**

4 pcs/box  
part # 4354220XXX

**4" Round x 4"**

4 pcs/box  
part # 4354240XXX

**4" Round x 6"**

4 pcs/box  
part # 4354260XXX

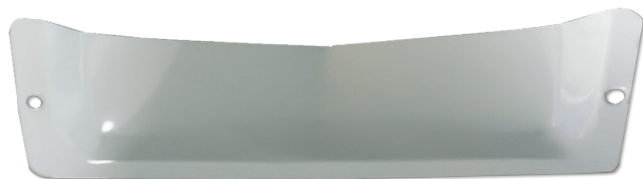
Available in: 26 Traditional, 1 Duel Tone® (129), 3 Armor Tough®, 16 oz. Solid Copper (890), Galvalume Plus Steel (920)



## DOWNSPOUT ACCESSORIES

### Scupper

1 pcs/box  
part # 496770001



## DOWNSPOUT HANGERS/PIPEBANDS

Available in all Senox colors, Quarter Moon hangers give a decorative finish to your downspout installations.

### Quarter Moon for Rectangular

For 2"X3" and 3"X4"  
100 pcs/box  
part # 4540650XXX



### Quarter Moon for Round

For 3" and 4"  
100 pcs/box  
part # 4541650XXX



Available in: 26 Traditional, 1 Duel Tone® (129), 3 Armor Tough®, 16 oz. Solid Copper (890), Galvalume Plus Steel (920)

### Concealed for Rectangular

For 2"X3" and 3"X4"  
100 pcs/box  
part # 4535550XXX



Available in: 26 Traditional, 1 Duel Tone® (129), 3 Armor Tough®, 16 oz. Solid Copper (890), Galvalume Plus Steel (920)

## K-STYLE INTERNAL HANGERS

### 1600 Series for 5", 6"

Aluminum .060 with or without clip

*Our most economical .060 robust hanger (but still built to Senox's high standards)*

100 pcs/box - Aluminum

5", no clip - part # 2416501099

5", w/clip - part # 2416531099

6", no clip - part # 2416601099

6", w/clip - part # 2416631099

Mini-barrels - Aluminum

5", no clip - 1000 pcs - part # 2416504099

5", w/clip - 1000 pcs - part # 2416534099

6", no clip - 500 pcs - part # 2416603099

6", w/clip - 500 pcs - part # 2416633099

### 1800 Series for 5", 6"

Aluminum .047 with or without clip

*The most cost efficient way to eliminate gutter rattle*

100 pcs/box - Aluminum

5", no clip - part # 2418501099

5", w/clip - part # 2418531099

6", no clip - part # 2418601099

6", w/clip - part # 2418631099

Mini-barrels - Aluminum

5", no clip - 1000 pcs - part # 2418504099

5", w/clip - 1000 pcs - part # 2418534099

6", no clip - 500 pcs - part # 2418603099

6", w/clip - 500 pcs - part # 2418633099

### 2100 Series for 5", 6"

Aluminum .060 with or without clip

*Our top seller! Senox's strongest hanger to come without a pre-loaded screw.*

100 pcs/box - Aluminum

5", no clip - part # 2421501099

5", w/clip - part # 2421531099

6", no clip - part # 2421601099

6", w/clip - part # 2421631099

Mini-barrels - Aluminum

5", no clip - 1000 pcs - part # 2421504099

5", w/clip - 1000 pcs - part # 2421534099

6", no clip - 500 pcs - part # 2421603099

6", w/clip - 500 pcs - part # 2421633099

### 2300 Series for 5", 6"

Aluminum .047 with or without clip

Copper .050 with or without clip

Galvalume Plus Steel .040 with or without clip

*A wider hanger, comes with 3 pre-drilled holes (so breaking a screw is no big deal!)*

100 pcs/box - Aluminum (099), Solid Copper (890), Galvalume Plus Steel (920)

5", no clip - part # 2423501XXX

5", w/clip - part # 2423531XXX

6", no clip - part # 2423601XXX

6", w/clip - part # 2423631XXX

Mini-barrels - Aluminum

5", no clip - 500 pcs - part # 2423503099

5", w/clip - 500 pcs - part # 2423533099

6", no clip - 250 pcs - part # 2423602099

6", w/clip - 250 pcs - part # 2423632099

### 2800 Series for 5", 6"

Aluminum .047 with or without clip, #10 x 1.5" screw with T17 point, hi-low thread, 1000 hour black ruspert

Copper .050 with or without clip, #10 x 1.5" screw with T17 point, hi-low thread, stainless steel

Galvalume Plus Steel .040 with or without clip, #10 x 1.5" screw with T17 point, hi-low thread, 1000 hour black ruspert

ruspert

*Comes with Rattler™ front lip, and preloaded with 1.5" screw and washer for convenience.*

100 pcs/box - Aluminum (099), Solid Copper (890)

5", no clip - part # 2428501XXX

5", w/clip - part # 2428531XXX

6", no clip - part # 2428601XXX

6", w/clip - part # 2428631XXX

Mini-barrels - Aluminum

5", no clip, 500 pcs - part # 2428503099

5", w/clip, 500 pcs - part # 2428533099

6", no clip, 250 pcs - part # 2428602099

6", w/clip, 250 pcs - part # 2428632099

100 pcs/box - Galvalume Plus Steel

5", no clip - part # 2428501920

5", w/clip - part # 2428531920

6", no clip - part # 2428601920

6", w/clip - part # 2428631920



## K-STYLE INTERNAL HANGERS

### 2900 Series for 5", 6"

**Aluminum .047 with or without clip, #10 x 2" screw with T17 point, hi-low thread, 1000 hour black ruspert**  
**Galvalume Plus Steel .040 with or without clip, #10 x 2" screw with T17 point, hi-low thread, 1000 hour black ruspert**

*Comes with Rattler® front lip, and preloaded with 2" screw for convenience.*

100 pcs/box - Aluminum (099),  
 Galvalume Plus Steel (920)  
 5", no clip - part # 2429501XXX  
 5", w/clip - part # 2429531XXX  
 6", no clip - part # 2429601XXX  
 6", w/clip - part # 2429631XXX

Mini-barrels - Aluminum  
 5", no clip, 500 pcs - part # 2429503099  
 5", w/clip, 500 pcs - part # 2429533099  
 6", no clip, 250 pcs - part # 2429602099  
 6", w/clip, 250 pcs - part # 2429632099



### 3400 Series for 5", 6"

**Aluminum .047 with or without clip, #10 x 3" screw with T17 point, hi-low thread, 1000 hour black ruspert**

*Strong & Convenient, comes preloaded with 3" screw.*

100 pcs/box - Aluminum  
 5", no clip - part # 2434551099  
 5", w/clip - part # 2434571099  
 6", no clip - part # 2434651099  
 6", w/clip - part # 2434671099

Mini-barrels - Aluminum  
 5", no clip, 500 pcs - part # 2434553099  
 5", w/clip, 500 pcs - part # 2434573099  
 6", no clip, 250 pcs - part # 2434652099  
 6", w/clip, 250 pcs - part # 2434672099



### 3600 Series for 5", 6"

**Aluminum .047 with or without clip, #12 x 3" screw with T17 point, hi-low thread, 1000 hour black ruspert**

*Strong & Convenient, comes preloaded with #12 screw.*

100 pcs/box - Aluminum  
 5", no clip - part # 2436551099  
 5", w/clip - part # 2436571099  
 6", no clip - part # 2436651099  
 6", w/clip - part # 2436671099

Mini-barrels - Aluminum  
 5", no clip, 500 pcs - part # 2436553099  
 5", w/clip, 500 pcs - part # 2436573099  
 6", no clip, 250 pcs - part # 2436652099  
 6", w/clip, 250 pcs - part # 2436672099



### 3800 Series for 5", 6"

**Aluminum .047, wider, with or without clip, #12 x 3" screw with T17 point, hi-low thread, 1000 hour black ruspert**  
**Copper .050, with or without clip, #12 x 3" screw with T17 point, hi-low thread, 1000 hour black ruspert**  
**Galvalume Plus Steel .040, with or without clip, #12 x 3" screw with T17 point, hi-low thread, 1000 hour black ruspert**

*A more robust version of the 3600 hanger, comes preloaded with #12 screw.*

100 pcs/box - Aluminum (090), Solid Copper (890), Galvanized Steel (910)  
 5", no clip - part # 2438551099  
 5", w/clip - part # 2438571XXX  
 6", no clip - part # 2438651099  
 6", w/clip - part # 2438671XXX



### 3800 Series for 7"

**Copper .050, with clip, #12 x 3" screw with T17 point, hi-low thread, stainless steel**  
**Galvalume Plus Steel .040, with clip, #12 x 3" screw with T17 point, hi-low thread, 1000 hour black ruspert**

*A more robust 7" version of the 3600 hanger, comes preloaded with #12 screw.*

100 pcs/box - Solid Copper, Galvalume Plus Steel  
 7", w/clip - part # 2438771XXX



## K-STYLE INTERNAL HANGERS

### **4000 Series for 5", 6"**

**Aluminum .055, with or without clip, #12 x 3.5" screw with T17 point, hi-low thread, 1000 hour black ruspert**  
**Copper .050, with or without clip, #12 x 3.5" screw with T17 point, hi-low thread, stainless steel**

*Our strongest hanger, comes preloaded with #12 screw.*

- 100 pcs/box - Aluminum (099), Solid Copper (890)
- 5", no clip- part # 2440551XXX
- 5", w/clip - part # 2440571XXX
- 6", no clip- part # 2440651XXX
- 6", w/clip - part # 2440671XXX

- Mini-barrels - Aluminum
- 5", no clip, 500 pcs - part # 2440553099
- 5", w/clip, 500 pcs - part # 2440573099
- 6", no clip, 250 pcs - part # 2440652099
- 6", w/clip, 250 pcs - part # 2440672099



### **4200 Series for 7"**

**Aluminum .060, with or without clip, #12 x 3" screw with T17 point, twin lead thread, 1000 hour black ruspert**  
*7", .060 thick version of the 3800 hanger- Strong & Convenient, comes preloaded with #12 screw.*

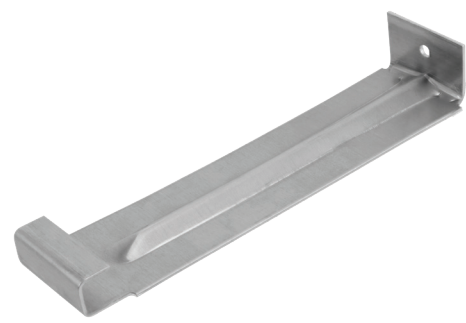
- 100 pcs/box - Aluminum
- 7", no clip - part # 2442761099
- 7", w/clip - part # 2442771099



### **7000 Series for 7"**

**Aluminum .060, without clip**  
**Stainless Steel .060, without clip**  
**Galvanized Steel .060, without clip**

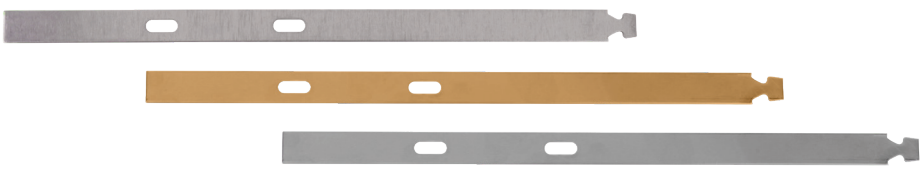
- 400 pcs/box
- 7", no clip- Aluminum- part # 2442731099
- 7", no clip- Stainless Steel- part # 2442731961
- 7", no clip- Galvanized Steel- part # 2442731910



### **T-Strap**

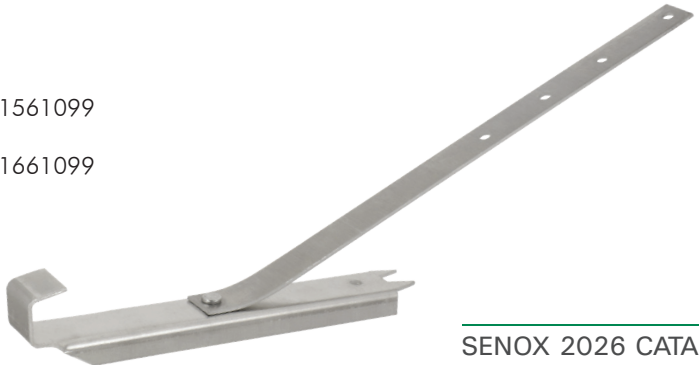
100 pcs/box - Aluminum (099), Solid Copper (890), Stainless Steel (961)

10" T-Strap - part # 2499001XXX



### **9700 Series for 5", 6"**

- 100 pcs/box - Aluminum
- 5", Vampire, w/strap - part # 2441511099
- 5", Vampire (rod sold separate) - part # 2441561099
- 6", Vampire, w/strap - part # 2441611099
- 6", Vampire (rod sold separate) - part # 2441661099
- 11" Vampire Rod - part # 2441001099



# HALF ROUND

## REVERSE BEAD HALF ROUND INTERNAL HANGERS

### 5000 Series for 6"HR

Aluminum .060 with or without clip

100 pcs/box - Aluminum  
6", w/clip - part # 2450631099  
6", no clip - part # 2450611099



*Designed specifically for Half Round internal hangers, includes an extended wedge clip that sits against the fascia, preventing the gutter from tipping forward.*

### 5100 Series w/ Wedge for 6"

Aluminum .060, with clip

Copper .050, with clip

Galvalume Plus Steel .040, with clip



100 pcs/box  
part # 2451631XXX

### 5300 Series w/ Wedge for 6"

Aluminum .060, with clip, #12 x 3" screw with T17 point, hi-low thread, 1000 hour black ruspert

Copper .050, with #12 x 3" screw with T17 point, hi-low thread, stainless steel

Galvalume Plus Steel .040, with clip, #12 x 3" screw with T17 point, hi-low thread, 1000 hour black ruspert

100 pcs/box  
part # 2453661XXX



Available in: Aluminum (099), Solid Copper (890), Galvalume Plus Steel (920)

Available in: Aluminum (099), Solid Copper (890), Galvalume Plus Steel (920)

## HALF ROUND EXTERNAL HANGERS

### 6" #10 Combo w/Spring

50 pcs/box  
part # 255004XXX



Available in: White (001), Brown (002), Dark Bronze (025), Solid Copper (890), Galvanized Steel (910)

### 6" Circle w/Spring, Nut, & Bolt

50 pcs/box  
part # 255224XXX



### Extra Spring

50 pcs/box  
part # 255226XXX



Available in: White (001), Brown (002), Dark Bronze (025), Brass (870), Galvanized Steel (910)

### #6 Shank for OG Crown Molding

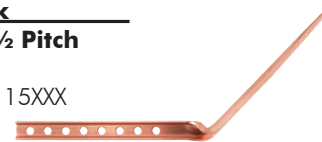
50 pcs/box  
part # 255106XXX



Available in: Solid Copper (890), Galv Steel (910)

### #25 Shank Sheeting 1/2 Pitch

50 pcs/box  
part # 255115XXX



Available in: Solid Copper (890), Galv Steel (910)

### #11 Shank Exposed Rafter 1/3 Pitch

50 pcs/box  
part # 255111XXX



Available in: White (001), Brown (002), Solid Copper (890), Galvanized Steel (910)

### #12 Shank Sheeting 1/3 Pitch

50 pcs/box  
part # 255112XXX



Available in: White (001), Brown (002), Dark Bronze (025), Solid Copper (890), Galvanized Steel (910)

### #30 Shank Adjustable Pitch w/Nut & Bolt

50 pcs/box  
part # 255116XXX



Available in: White (001), Brown (002), Dark Bronze (025), Solid Copper (890), Galvanized Steel (910)

### 5800 Series

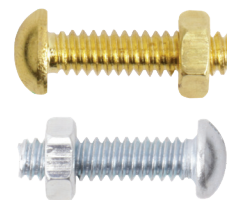
25 pcs/box  
part # 2558721XXX



Available in: 26 Traditional, 1 Duel Tone®(129), 3 Armor Tough®, 16 oz. Solid Copper (890), Galvalume Plus Steel (920)

### Extra Bolt w/Nut #10/24 x 3/4"

50 pcs/box  
part # 255228XXX



Available in: Brass (870) Galvanized Steel (910)

## END CAPS FOR HALF ROUND

Packaged 25 Pcs/Box

### 6" Right or Left

right - part # 2266030XXX

left - part # 2266050XXX



Right



Left

Available in: 26 Traditional, 1 Duel Tone® (129), 3 Armor Tough®, 16 oz. Solid Copper (890), Galvalume Plus Steel (920)

## MITERS FOR HALF ROUND

Packaged 20 Pcs/Box

### 6", 90°, Strip, O/S or I/S

O/S - part # 2366110XXX

I/S - part # 2366130XXX



### 6", 45°, Bay, O/S or I/S

O/S - part # 2366310XXX

I/S - part # 2366330XXX



Available in: 26 Traditional, 1 Duel Tone® (129), 3 Armor Tough®, 16 oz. Solid Copper (890), Galvalume Plus Steel (920)

## OUTLETS FOR HALF ROUND

Packaged 50 Pcs/Box

### 3" Round

part # 2653640XXX



Available in: White (001), Solid Copper (890),  
Galvanized Steel (910)

### 4" Half Round

part # 2654440XXX



Available in: Black (004), Solid Copper (890),  
Galvanized Steel (910)

## BLACK MAX® MINI PUNCH PAK FOR HALF ROUND

Everything you need to install half round outlets; the Mini Punch Pak includes Punch, 1 1/2" Hole Saw, 1/4" Driver Power Bit, and bulk savings on the outlets you need.

### 4" Half Round

10 Outlets

part # 2654448004

Includes: Punch, 1 1/2" Hole Saw, 1/4" Driver Power Bit, Outlets



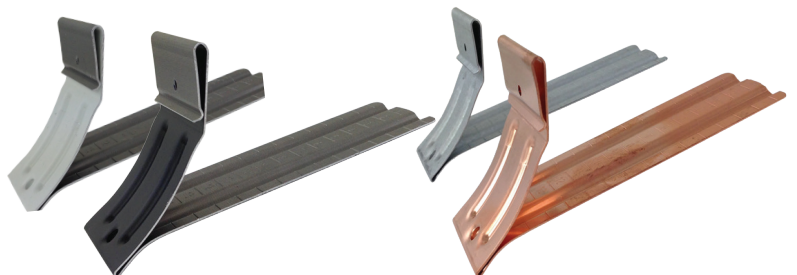
## GUTTER WEDGES FOR REVERSE BEAD HALF ROUND

### Gutter Bumper® HR

100 pcs/box

part # 2928660XXX

Available in: 30° White (001), Black (004),  
16 oz. Solid Copper (890),  
Galvalume Plus Steel (920)



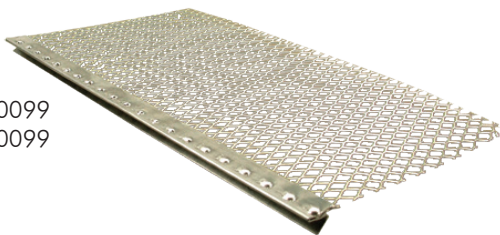
## GUTTER GUARDS

### ALUMINUM EXPANDED WIRE GUTTER GUARD

*Our most cost effective solution for keeping your customer's gutters debris-free.*

#### Drop-In

4' pcs, 50 pcs/box  
5" - part # 3813050099  
6" - part # 3813060099



#### Fast Screen

4' pcs, 50 pcs/box  
5" - part # 3815050099  
6" - part # 3815060099



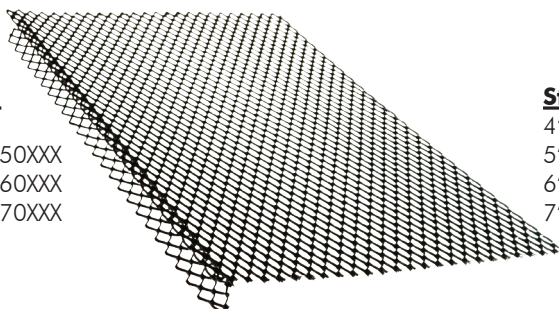
Available in: Aluminum

### POWDER COATED EXPANDED WIRE GUTTER GUARD

*Powder coated galvanized steel provides superior rust, rodent, and debris protection for decades to come.*

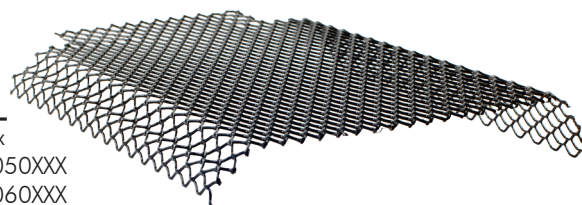
#### Roll Lock

4' pcs, 25 pcs/box  
5" - part # 3821050XXX  
6" - part # 3821060XXX  
7" - part # 3821070XXX



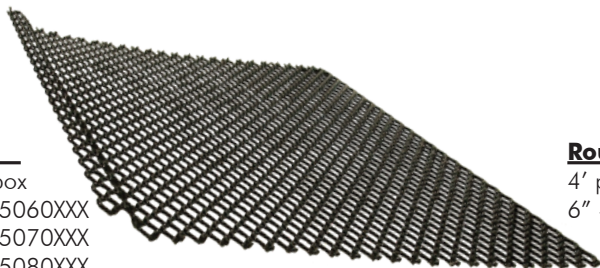
#### Step Lock

4' pcs, 25 pcs/box  
5" - part # 3823050XXX  
6" - part # 3823060XXX  
7" - part # 3823070XXX



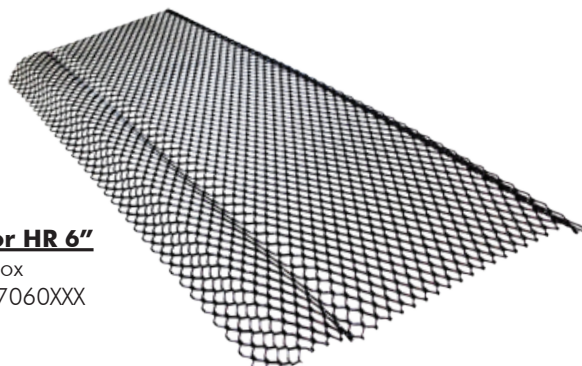
#### Flat Lock

4' pcs, 25 pcs/box  
6" - part # 3825060XXX  
7" - part # 3825070XXX  
8" - part # 3825080XXX  
9" - part # 3825090XXX



#### Round Lock for HR 6"

4' pcs, 25 pcs/box  
6" - part # 3827060XXX



Available in: Black (004), Solid Copper (890)

### PERFORATED GUTTER GUARD

*Senox perforated gutter guards keep more debris from entering gutters and make cleaning them a breeze.*

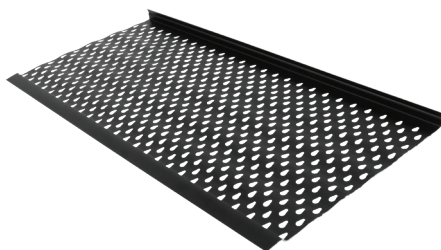
#### Eave N Flow

4' pcs, 50 pcs/box  
5" - part # 3914050004  
6" - part # 3914060004

Available in: Black

#### Eave N Flow Elite

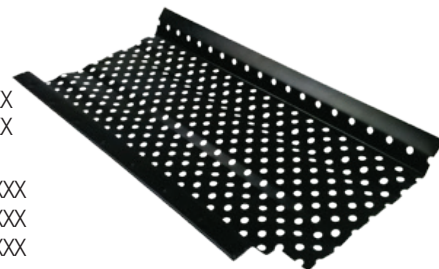
4' pcs, 50 pcs/box  
5" - part # 3915050XXX  
6" - part # 3915060XXX



#### Smart Flow

4' pcs, 50 pcs/box  
5" x 4' - part # 3914000XXX  
6" x 4' - part # 3914010XXX  
10' pcs, 25 pcs/box  
5" x 10' - part # 3914100XXX  
6" x 10' - part # 3914110XXX  
7" x 10' - part # 3914120XXX

Available in: White (001), Black (004)

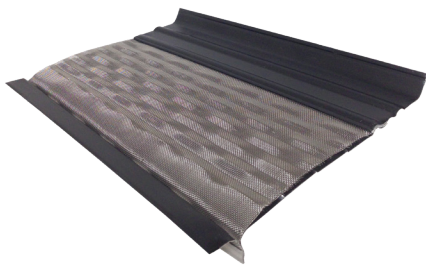


## STAINLESS STEEL METAL MESH GUTTER GUARD

For areas with fine debris like pine needles, metal mesh gutter guards provide the ultimate in debris protection.

### Mesh Guard

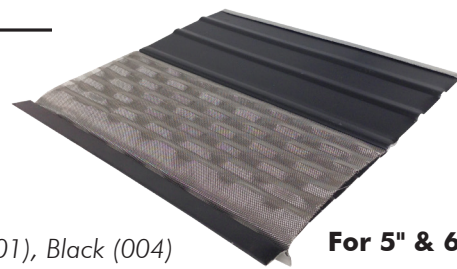
4' pcs, 25 pcs/box  
5" - part # 3930050004  
6" - part # 3930060004



Available in: Black

### Mesh Guard Panel

4' pcs, 25 pcs/box  
part # 3931050XXX



Available in: White (001), Black (004)

For 5" & 6"

## LOUVERED GUTTER GUARD

Leaf protection that is as easy to install as it is to clean.

### E-Z Leaf Sweep

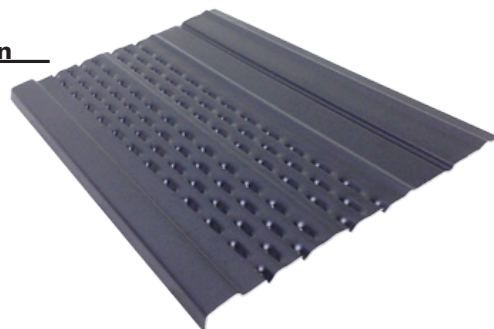
4' pcs, 25 pcs/box  
5" - part # 3924050XXX  
6" - part # 3924060XXX



Available in: White (001), Black (004)

### E-Z Leaf Protection

4' pcs, 25 pcs/box  
part # 3925050XXX



Available in: White (001), Black (004)

For 5" & 6"

## SOLID GUTTER GUARD

Solid gutters guards use surface tension to direct water over the front and into the gutter. Unique patent pending gap system protects the gutter without clogging the outlets.

### LeafFree

4' pcs, 25 pcs/box  
part # 395215XXX



For 5" & 6"

### Leaffree High Water Flow

4' pcs, 25 pcs/box  
part # 395225XXX



For 5" & 6"

Available in: 30° White (001), Royal Brown (002), Antique Ivory (003), Black (004), Clay (008), Sherwood Green (010), Musket Brown (011), Wicker (013), Almond (015), Linen (017), Light Bronze (018), Tuxedo Gray (019), Heritage Cream (020), Colonial Gray (021), Colonial Red (024), Dark Bronze (025)

\*Solid Copper Special Order

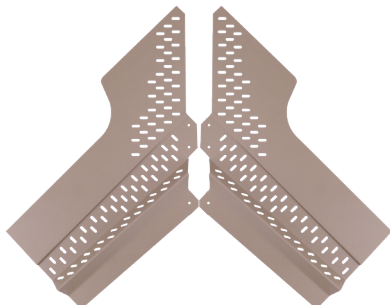
### LeafFree Endcap

25 pcs/box  
Right- part # 395255XXX  
Left- part # 395265XXX



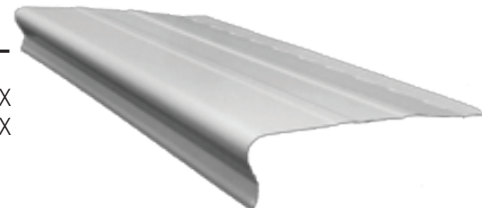
### LeafFree Inside Miter (2 pc)

10 sets/box  
part # 395285XXX



### Midwest Solid

4' pcs, 25 pcs/box  
5" - part # 395015XXX  
6" - part # 395016XXX



Available in: 30° White (001), Royal Brown (002), Black (004), Clay (008), Wicker (013), Almond (015), Light Bronze (018), Colonial Gray (021)

### SPLASH BLOCKS

**Plastic, Slate, 10" x 21"**

10 pcs/box  
Gray - part # 612100014  
Tan - part # 612100017



**Concrete, 11" x 18"**

100 pcs/pallet  
Gray - part # 611115014



**Concrete, 12" x 12"**

160 pcs/pallet  
Gray - part # 611110014



### FLEX-DRAIN® UNDERGROUND DRAINAGE & ADAPTORS

Packaged 1 Unit/Box

**FLEX-Drain® 4" x 12' Perforated Pipe**

part # 622512004



**FLEX-Drain® 4" x 25' Solid Pipe**

part # 622516004



**FLEX-Drain® 4" Coupler**

part # 622520004



**FLEX-Drain® 4" Flexible T/Y**

part # 622525004



**FLEX-Drain® 2" x 3" x 4" Downspout Adapter**

part # 622522004



**FLEX-Drain® 3" x 4" x 4" Downspout Adapter**

part # 622524004



Available in: Black

### UNIVERSAL DRAINAGE & ADAPTORS

Packaged 1 Unit/Box

**2" x 3" DS to 4" Universal**

part # 623022004



**3" x 4" DS to 4" Universal**

part # 623024004



Available in: Black

## RIVETS #42 X 1/8"

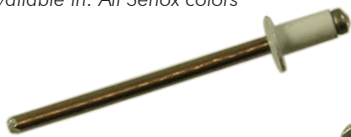
Packaged 100 Pcs/Bag

A wide selection of colors are available to more effectively blend with Senox gutters.

### Aluminum, Painted

part # 521421XXX

Available in: All Senox colors



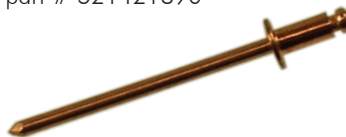
### Steel, Zinc Plated

part # 521421905



### Solid Copper Barrel, Copper Plated Mandrel

part # 521421890



## RIVETS #44 X 1/8"

Packaged 100 Pcs/Bag

### Rivet #44 x .125"

part # 521441001

Available in: 30 White



## #8 SCREWS

### 1/4" Hex Head, 1/2" 1000 Hour Black Ruspert Coating

100 ct. - part # 511211XXX

1000 ct. - part # 511212XXX



### 1/4" Hex Head

### 1/2" Zinc Plated

100 ct. - part # 511211905

1000 ct. - part # 511212905



### 1/4" Hex Head

### 1/2" Copper Plated Stainless Steel

100 ct. - part # 511211967



Available in: All Senox colors

## SENOX SPEED MASTER® SCREWS

Senox Speed Master® screws are the only ones on the market specifically designed for gutter installation, coated with a long lasting black ruspert finish to better prevent corrosion.

Packaged 250 Pcs/Bag

### #10 x 1 1/2" No Washer, 1000 Hour Black Ruspert Coating

part # 513042904

### #10 x 1 1/2" With Washer, 1000 Hour Black Ruspert Coating

part # 513142904

### #10 x 2" No Washer, 1000 Hour Black Ruspert Coating

part # 513052904

### #10 x 2" With Washer, 1000 Hour Black Ruspert Coating

part # 513152904



Packaged 50 Pcs/Bag

### #10 x 1 1/2" With Washer Stainless Steel

part # 95513144961



### #10 x 2" With Washer Stainless Steel

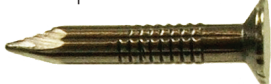
part # 95513154961



## NAILS, DRIVE PINS, & ANCHORS

### 1" Masonry Galvanized Steel

5 lb. - part # 531412910



### 1 1/2" Masonry Galvanized Steel

5 lb. - part # 531432910



### #10 1/4" Plastic Anchor

100 ct. - part # 541210099



## PAINT/SEALANT

### TOUCH-UP PAINT

Packaged 12 Pcs/Box

#### Brush-On Paint, 0.6 oz.

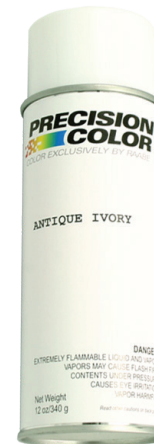
part # 581006XXX



Available in: 26 Traditional,  
1 Duel Tone®, 3 Armor Tough®

#### Spray-On Paint, 12 oz.

part # 582160XXX



Available in: 26 Traditional, 3 Armor Tough®

### SEALANT - NITRILE RUBBER BASE

Packaged 24 Pcs/Box

#### Rusco PSCG, 1/10 Gallon

part # 591141014



#### Rusco PSCG-HV, 1/10 Gallon

part # 591142014



### SEALANT - TRIPOLYMER BASE

Packaged 24 Pcs/Box

#### Geocel 2320, 1/10 Gallon

part # 593320XXX



Available in: White, Gray, Clear

### SEALANT - SBR RUBBER BASE

Packaged 24 Pcs/Box

#### OSI GS121, 1/10 Gallon

part # 592121001



Available in: White

### SEALANT - HYBRID POLYMER BASE

#### Seal Bond SB-415, 10.1 oz.

part # 593350014



## AVIATION SNIPS

### Max 2000, Left

part # 891M2001



### Max 2000, Right

part # 891M2002



### Max 2000, Straight

part # 891M2003



## OFFSET SNIPS

### Max 2000, Left

part # 891M2006



### Max 2000, Right

part # 891M2007



## STRAIGHT SNIPS

### Straight Snips, 12"

part # 891M12N

part # 891M12A



### Straight Snips, 14"

part # 891M14N

part # 891M14A



## COMBINATION SNIPS

### Combination Snips, 12"

part # 891MC12N

part # 891MC12A



### Combination Snips, 14"

part # 891MC14N

part # 891MC14A



## END CAP CRIMPERS

### Snap Lock Punch

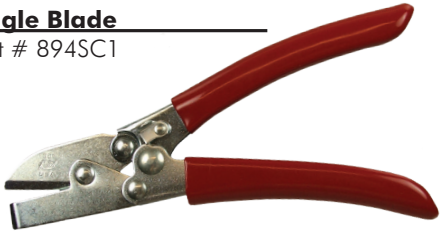
part # 894SL1R



**DOWNSPOUT CRIMPERS**

**Single Blade**

part # 894SC1



**3-Blade**

part # 894SC3R



**5-Blade**

part # 894C4R



**MAX2000 Double-Cut**

part # 891M2004



**HAND SEAMERS**

**3"**

part # 894S2R



**Offset, 3"**

part # 894S3R



**6"**

part # 894S6R



**Tool Replacement Spring**

part # 8945018



**CAULKING, DRIVERS, & LEVELING**

**Nut Driver, 1/4"**

- 1 3/4" - part # 895MSH14
- 2 9/16" - part # 895MSHL14
- 4" - part # 895MSHML14
- 6" - part # 895MSHXL14
- 8" - part # 895MSHL148
- Impact 6" - part # 895MSHXL14I



**Torpedo Level, 9"**

part # 898L9



**Hand Riveter, Economy**

part # 896CR18



**Vampire T-Bar Tool**

part # 89717232



**Caulking Gun**

part # 898CG12



## CUTTING & DRILLING

### Hole Saw 1 1/2"

part # 8926928



### Hole Saw 2 3/8" & 2 3/4"

2 3/8" part # 892H38

2 3/4" part # 892H44



### Quick Open Utility Knife

part # 8929PK



### Hole Saw Pilot Bit

part # 892HSB



### #30 Double Ended Bit 1/8"

part # 896NDE30



### Grease Crayon, White, .43 oz.

part # 899WLB2



### ProTouch Combi-Saw

part # 892218HP300



### 12" 32 TPI Hacksaw Blade

part # 89220146V232HE



### Saw Blade Lubricant Stick

part # 899LUBS



## LADDER ACCESSORIES

### Ladder Max

part # 898162100



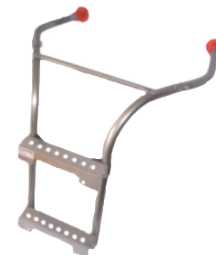
### Ladder Guards

part # 898165510



### Ladder Max Multi-Pro

part # 898162110



## MISCELLANEOUS ACCESSORIES

### Wasp Spray, 20 oz.

part # 899WASP



### Trough Mate

part # 898TM614



### Extension Cord, 50', 10 ga.

part # 898ECORD50



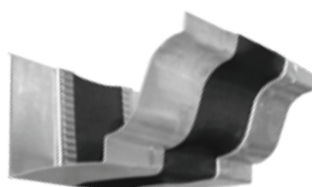
## JOINTS

### Expansion Joints for K-Style 5", 6"

1 unit/box

5" - part # 293305099

6" - part # 293306099



Available in: Aluminum

RAIN CHAINS

**Lotus Cup**

**Painted Aluminum**

part # 494061XXX

Available in: Black (004),  
Pewter/Dark Bronze (025)



BLACK

**Lotus Cup**

**Copper**

part # 494061890

Available in: Solid Copper



COPPER

**Hammered Cup**

**Painted Aluminum**

part # 494021XXX

Available in: Black (004), Dark Bronze (025)

**Hammered Cup**

**Copper**

part # 494021890

Available in: Solid Copper



BLACK



DARK BRONZE/PEWTER



SOLID COPPER

**Gutter Reducer Adaptor**

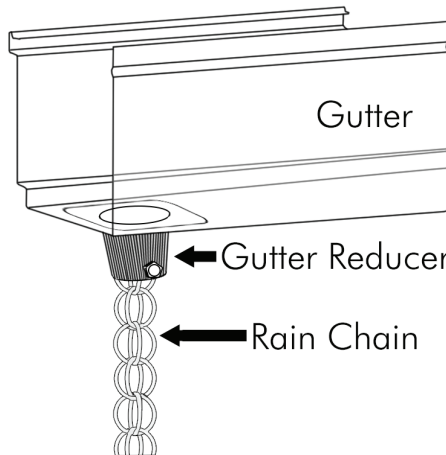
**Copper**

part # 494111890

**Rain Chain Anchoring Stakes**

part #494081890 Copper Chain, Brown Stake

part #494081961 Stainless Steel Chain, Black Stake



**Gutter Reducer Adaptor**

**Black**

part # 494111004



# CONDUCTOR HEADS

Packaged 1 Unit/Box

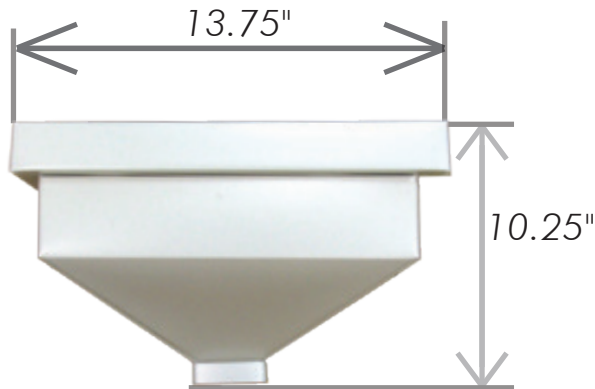
Senox conductor heads are available in a wide variety of sizes and colors, to perfectly finish the job with no modifications needed.

### Plain

2" x 3" & 3" x 4" Rectangle Outlet

2" x 3" - part # 441005XXX

3" x 4" - part # 441006XXX



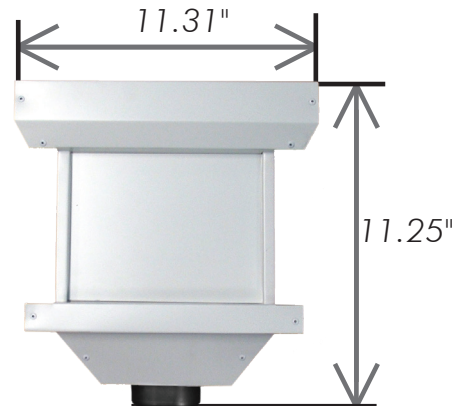
Available in: 30° White (001), 16 oz. Solid Copper (890), Galvalume Plus Steel (920)

### Decorative

3" & 4" Oval Outlet

3" - part # 441201XXX

4" - part # 441203XXX



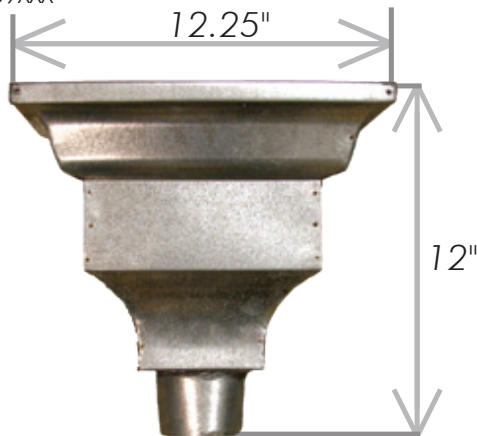
Available in: 26 Traditional, 1 Duel Tone® (129), 3 Armor Tough®, 16 oz. Solid Copper (890), Galvalume Plus Steel (920)

### Ornamental

3" & 4" Round Outlet

3" - part # 442008XXX

4" - part # 442009XXX

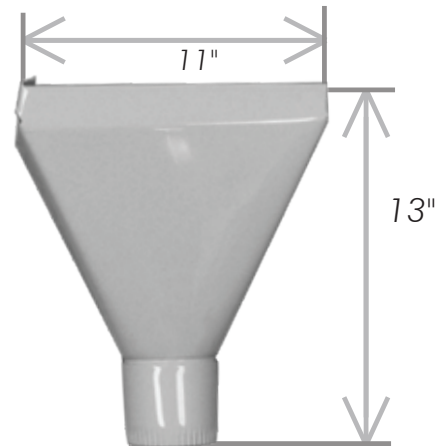


Available in: 16 oz. Solid Copper (890), Galvanized Steel (920)

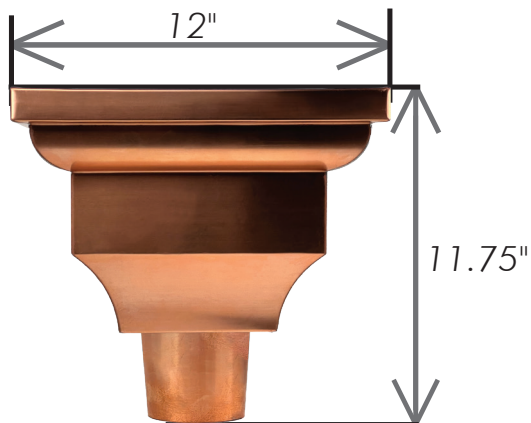
### Basic

4" Round Outlet

part # 441603001



Available in: 30° White



# the Complete Boxer™ Style Gutter System

*Now Available!*  
 Exclusively from

# SENOX®



The new 6" Boxer™ machine is now in stock, and provides a number of features such as the exclusive z"Pocket Lock" lip, 90° strengthening cutout, & Leaf Rib Roller. Pair with Senox Boxer™ End Caps to produce the ultimate box-style gutter!



**6" Boxer**  
 (base machine w/ dongle & rib roller)  
 part # 8180160251

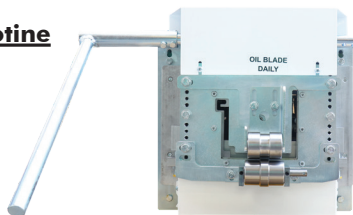


**6" Boxer**  
 Height: 17"  
 Width: 24"  
 Length: 139.75"  
 Weight: 1200 lbs (base machine)

The new Leaf Rib feature allows you to add a strengthening rib to the bottom of the gutter, making oilcanning a thing of the past. Adding the rib is like increasing the material thickness without requiring any additional material, creating a stronger profile for the same cost!

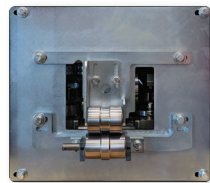
**Boxer Front Pull Guillotine**

**6" Boxer**  
 part # 8180300261



**Boxer End Plate (No Shear)**

**6" Boxer**  
 part # 8180350261



**BOXER ENDCAPS**

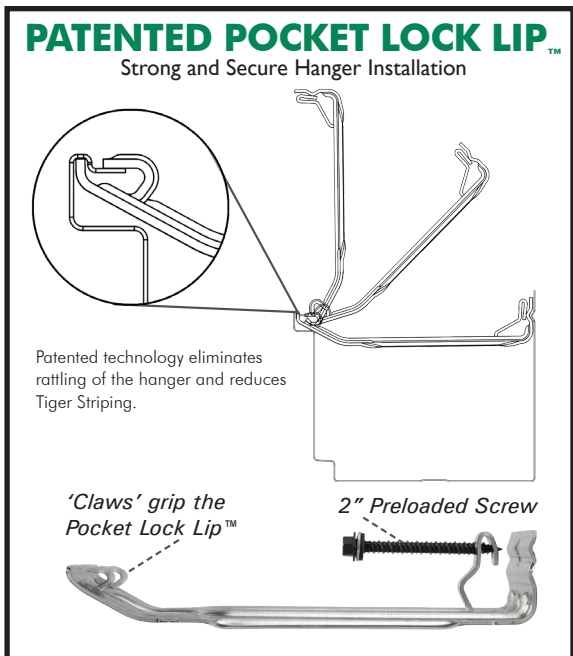
**For 6" Boxer**

25 pcs/box - Aluminum,  
 (all colors), Copper (890),  
 and Galvalume Plus Steel (920)

6" Right - part # 3246030XXX  
 6" Left - part # 3246050XXX



**\*For Smooth Downspouts & Elbows, see page 8**



## BEARCLAW HANGERS

### For 6" Boxer

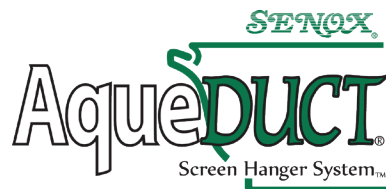
100 pcs/box - Aluminum (099), Copper (890), and Galvalume Plus (920)  
6", no clip, with screw - part # 3455601XXX



## BEARCLAW GUTTER GUARD

### For 6" Boxer

25 pcs/box - Aluminum (099), Copper (890)  
BearCLAW Expanded 6" x 4'-  
part # 383106XXX



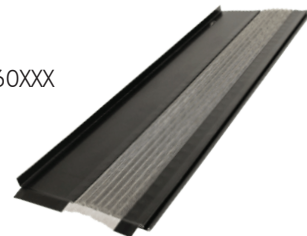
## AQUEDUCT SCREEN HANGERS

### For 6" Boxer

25 pcs/box  
Screen Hanger, 6" x 4' - part # 3540060XXX

Available in:

Black Aluminum (004), Copper (890), and Galvalume Plus (920)

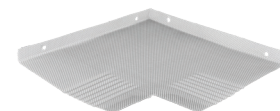
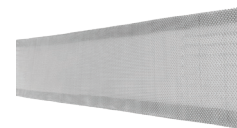


## AQUEDUCT MITERS

### For 6" Boxer

20 pcs/box  
Strip, 6", 90°, O/S & I/S  
part # 334311961

Bay, 6", 45° O/S & I/S  
part # 334331961



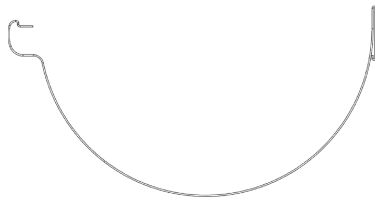
## AQUEDUCT INSTALLATION TOOL

Installation Tool, 6"  
part # 8L354006



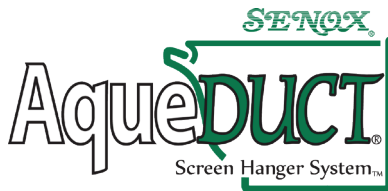
**6.5 HALF ROUND WEDGER**

Height: 19"  
 Width: 24"  
 Length: 161"  
 Weight: 1574 lbs (base machine)



**6.5" Half Round Wedger Gen 2**

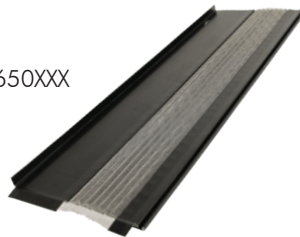
part # 8180202661



**AQUEDUCT SCREEN HANGERS**

**For 6.5" HR**

25 pcs/box  
 Screen Hanger, 6.5" x 4' - part # 3540650XXX  
 Available in:  
 Black Aluminum (004), Copper (890),  
 and Galvalume Plus Steel (920)



**BEARCLAW HANGERS**

**For 6.5" HR**

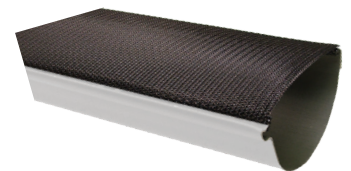
100 pcs/box - Aluminum  
 6", no clip, with screw - part # 3455601099  
 6.5" HR, with screw - part # 3455651099



**BEARCLAW GUTTER GUARD**

**For 6.5" HR**

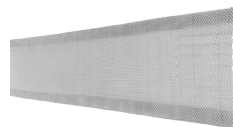
25 pcs/box  
 BearCLAW Expanded 6" x 4'-  
 part # 383106XXX  
 BearCLAW Expanded 6.5" x 4' HR-  
 part # 383166XXX



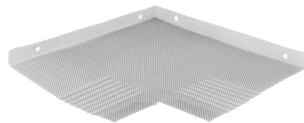
**AQUEDUCT MITERS**

**For 6.5" HR**

20 pcs/box  
 Strip, 6.5", 90°, O/S & I/S  
 part # 334511961



Bay, 6.5", 45° O/S & I/S  
 part # 334531961



**AQUEDUCT  
 INSTALLATION TOOL**

**Installation Tool, 6.5"**  
 part #8L354065



## SENOX BARRACUDA® GUTTER MACHINES

A quality gutter machine is the cornerstone of all successful gutter businesses, and it is incredibly important to make sure you have a reliable machine that will do exactly what you need to satisfy your customers. Contact your Senox representative before purchasing to help match you with the perfect machine for you.



**5" K-Style**  
2' x 4' x 6' 9"  
part # 81112001501

**5"/6" Combo K-Style**  
2' x 4' x 9"  
part # 81112001511

**6" K-Style**  
2' x 4' x 9"  
part # 81112001601

**6"/7" Combo K-Style**  
2' x 4' x 12' 7"  
part # 81112001621

**7" K-Style**  
2' x 4' x 12' 7"  
part # 81112001701

**6" Reverse Bead Half Round**  
2' x 4' x 14"  
part # 81112016601



## SENOX BARRACUDA® GUTTER MACHINE OPTIONS

Everything you need to get the most out of your Barracuda® gutter machine.

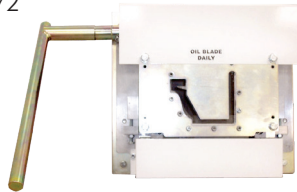
### Front Pull Guillotine

**5" & 5"/6" Combo**  
part # 8111300151

**7" & 6"/7" Combo**  
part # 8111300172

**6" & 5"/6" Combo**  
part # 8111300161

**6" & 6"/7" Combo**  
part # 8111300162



### End Plate (No Shear)

**5" & 6" & 5"/6" Combo**  
part # 8111350151

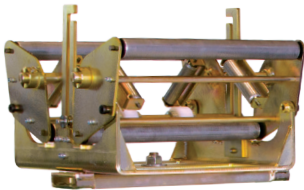
**7" & 6"/7" Combo**  
part # 8111350172



### Full Coil Cradle Machine Mount

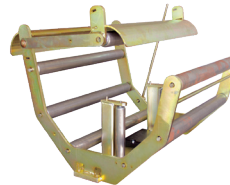
**5" & 6" | 5"/6" Combo | 6"HR**  
part # 811140151

**7" | 6"/7" Combo**  
part # 811140172



### Spin Coil Cradle Machine Mount

w/Single Scuff Bar & Side Roller Assembly  
part # 811145151



### Side Roller Assembly For Cradle

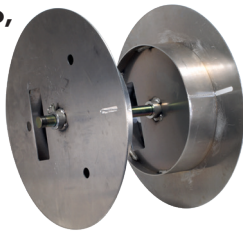
part # 81904505



### Spool w/ Shaft

**5" & 6" & 5"/6" Combo, 6" HR**  
part # 811160151

**7" & 6"/7" Combo**  
part # 811160172



### Upright Turnstile

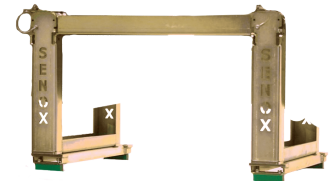
**5" & 6" | 5"/6" Combo | 6"HR**  
part # 811150151

**7" & 6"/7" Combo**  
part # 811150172



### Transfer Bar Set

**Fits All Sizes**  
part # 811165001



### Standard Run Out Stand w/ Adjustable Leg

**5" & 6" & 5"/6" Combo, 6" HR**  
part # 811180100

**7" & 6"/7" Combo**  
part # 811180107



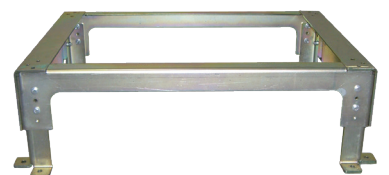
### Deluxe 3 Roller Run Out Stand w/ Adjustable Leg

**5" & 6" & 5"/6" Combo, 6" HR**  
part # 811180130



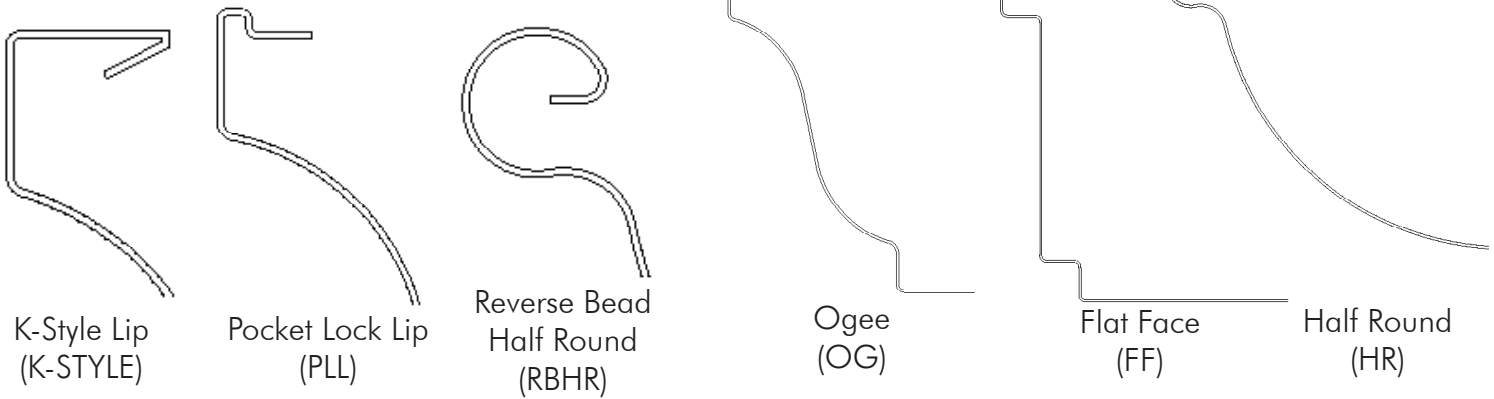
### Machine Stand Riser Pad, Tall

**Fits All Machines**  
part # 811190001

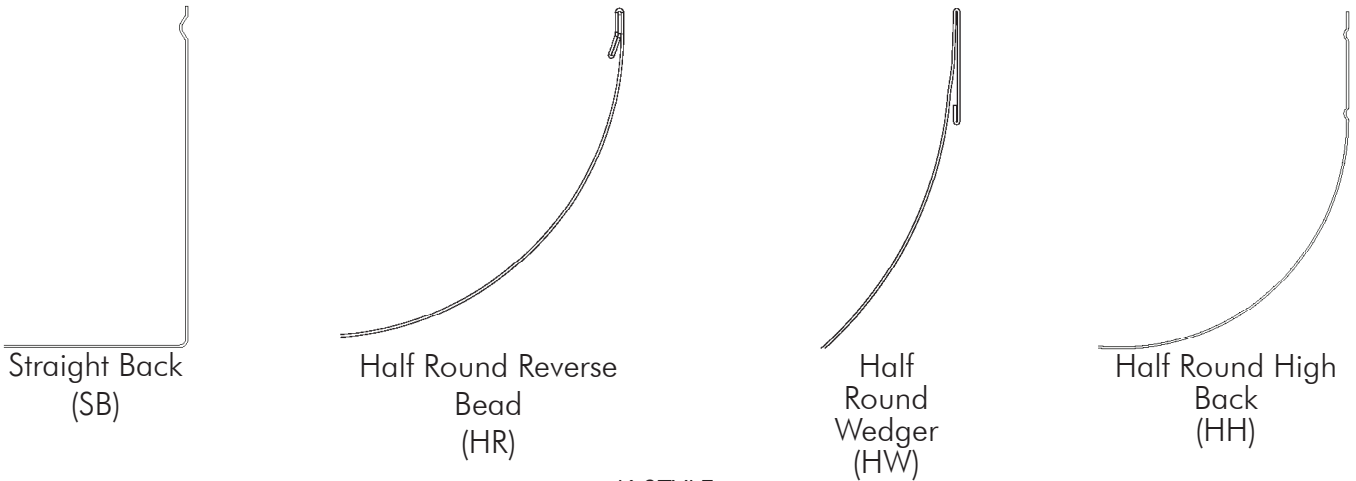


1. The front lip and associated hangers are available in K-Style (K-STYLE), Pocket Lock Lip (PLL), and Reverse Bead Half Round (RBHR).

2. The face and bottom are available in Ogee (OG), Flat Face (FF), and Half Round (HR).

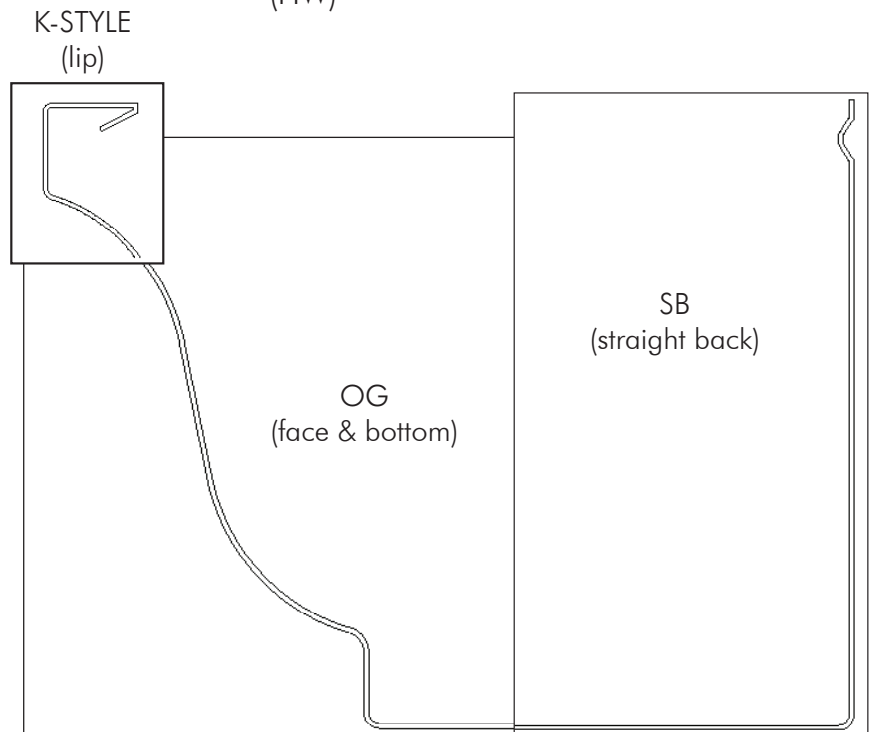


3. The back and gutter bumpers are available in Straight Back (SB), Straight Back High/Low (SBHL), Half Round Reverse Bead (HR), Half Round Wedger (HW), and Half Round High Back (HH).



The major discrepancy in everyone's mind is centered around OG vs. K-Style. Our opinion is OG speaks to the shape of the gutter face. This shape has been around since the Greeks. K-Style describes the hanger style and front lip design on the top of the OG shape. Over time the K-Style front lip and the OG shape have become synonymous in people's minds. Because of the new styles of front lips and hangers, this thinking needs to be separated to allow us to describe them separately. Our additional designs for the back of the gutter also call for more precise definitions.

—A.B. Walters  
Founder



**A**

Accessories, Downspout ..... 10

Accessories, Ladder ..... 23

Accessories, Miscellaneous ..... 23

Adaptors, Underground Drainage ..... 18

Anchors, Nails, & Drive Pins ..... 19

AqueDUCT (for Boxer)..... 27

AqueDUCT (for HR)..... 28

Aviation Snips ..... 21

**B**

Bar w/ Rod for 6" ..... 13

Barracuda Gutter Machines, Senox ..... 29

Barracuda Gutter Machine Options, Senox ..... 29

BearCLAW (for Boxer) ..... 27

BearCLAW (for HR) ..... 28

Black MAX Punch Pak Flat Bottom Gutter ..... 5

Black MAX Mini Punch Pak Flat Bottom Gutter ..... 5

Black MAX Punch Replacement Accessories ..... 5

Blade, Hacksaw ..... 23

Bolt w/ Nut ..... 14

Boxer Gutter Machine ..... 26

**C**

Caulking, Drivers, & Leveling ..... 22

Circular "Duckbill" Snips ..... 21

Coil, Seamless Gutter ..... 4

Combination Snips ..... 21

Combi-Saw ..... 23

Conductor Heads ..... 25

Copper Flat Sheets, Solid ..... 6

Crimpers, Downspout ..... 22

Crimpers, End Cap ..... 21

Cutting & Drilling ..... 23

**D**

Downspout Accessories ..... 10

Downspout Crimpers ..... 22

Downspout Hangers ..... 10

Downspouts, Rectangular ..... 7

Downspouts, Round ..... 9

Downspouts, Smooth ..... 8

Drainage & Adaptors ..... 18

Drilling & Cutting ..... 23

Drip Cap ..... 6

Drip Edge ..... 6

Drive Pins, Anchors, & Nails ..... 19

Drivers, Leveling, & Caulking ..... 22

Duckbill Snips, Circular ..... 21

**E**

Elbows, Rectangular ..... 7

Elbows, Round ..... 9

Elbows, Smooth ..... 8

End Cap Crimpers ..... 21

End Caps for Half Round ..... 15

End Caps for K-Style ..... 4

Expansion Joints for K-Style ..... 23

Extension Cord ..... 23

External Hangers, Half Round ..... 14

**F**

Flashing ..... 6

Flat Sheets, Solid Copper ..... 6

FLEX-Drain Underground Drainage & Adaptors ..... 18

**G**

Grease Crayon ..... 23

Gutter Bumper HR ..... 15

Gutter Bumper SB ..... 6

Gutter Coil, Seamless ..... 4

Gutter Guard, Aluminum Expanded Wire ..... 16

Gutter Guard, LeaFree ..... 17

Gutter Guard, Louvered ..... 17

Gutter Guard, Perforated ..... 16

Gutter Guard, Powder Coated Expanded Wire ..... 16

Gutter Guard, Solid ..... 17

Gutter Guard, Stainless Steel Metal Mesh ..... 17

Gutter Machine Options, Senox Barracuda ..... 29

Gutter Machine Options, Senox Boxer ..... 26

Gutter Machine Options, Half Round Wedger ..... 28

Gutter Machines, Senox Barracuda ..... 29

Gutter Machines, Senox Boxer ..... 26

Gutter Machines, Half Round Wedger ..... 28

Gutter Sections, Reverse Bead Half Round ..... 15

Gutter Wedges for Reverse Bead Half Round ..... 15

**H**

Hacksaw Blade ..... 23

Half Round External Hangers ..... 14

Half Round Gutter Sections, Reverse Bead ..... 15

Half Round Internal Hangers, Reverse Bead ..... 14

Half Round Miters ..... 15

Half Round Outlets ..... 15

Hand Riveters ..... 22

Hand Seamers ..... 22

Hangers, Downspout ..... 10

Hangers, K-Style Internal ..... 11-13

Hangers, Reverse Bead Half Round Internal ..... 14

Hangers, Half Round External ..... 14

Hole Saw 1 1/2", for Punch ..... 5, 23

Hole Saw ..... 23

**I**

Internal Hangers, BearCLAW (for Boxer) ..... 27

Internal Hangers, BearCLAW (for HR) ..... 28

Internal Hangers, Reverse Bead Half Round ..... 14

Internal Hangers, K-Style ..... 11-13

**J**

Joints ..... 23

**K**

K-Style Internal Hangers ..... 11-13

**L**

Ladder Accessories ..... 23

LeaFree Gutter Guard ..... 17

LeaFree Encaps ..... 17

LeaFree Inside Miters ..... 17

Leveling & Drivers ..... 22

Lubricant, Saw Blade ..... 23

**M**

Mini Punch Pak Flat Bottom Gutter, Black Max ..... 5

Mini Punch Pak Half Round, Black Max ..... 15

Miscellaneous Accessories ..... 23

Miters for Half Round ..... 15

Miters for K-Style ..... 4

**N**

Nails, Drive Pins, & Anchors ..... 19

**O**

Offsets, Custom ..... 9

Offsets, Rectangular ..... 7

Offsets, Round ..... 9

Offset Snips ..... 21

OSI Sealant ..... 20

Outlets for Flat Bottom Gutter ..... 5

Outlets for Half Round ..... 15

**P**

Paint, Touch-Up ..... 20

Pipe Bands, Downspout Hangers ..... 10

Punch Pak Flat Bottom Gutter, Black MAX ..... 5

Punch Pak Flat Bottom Gutter, Black MAX Mini ..... 5

Punch Pak Half Round, Black MAX Mini ..... 15

Punch Replacement Accessories, Black MAX ..... 5

**R**

Rain Chains ..... 24

Rectangular Downspouts ..... 7

Rectangular Elbows ..... 7

Rectangular Offsets ..... 7

Regular Pattern Snips ..... 21

Reverse Bead Half Round Gutter Sections ..... 15

Reverse Bead Half Round Internal Hangers ..... 14

Rivets, #42 x 1/8" ..... 19

Round Downspouts ..... 9

Round Elbows ..... 9

Round Offsets ..... 9

Ruscoe Sealants ..... 20

**S**

Saw Blade Lubricant ..... 23

Screws, #8 ..... 19

Screws, SpeedMaster® ..... 19

Sealant, Nitrile Rubber Base ..... 20

Sealant, SBR Rubber Base ..... 20

Sealant, Tripolymer Base ..... 20

Seamers, Hand ..... 22

Seamless Gutter Coil ..... 4

Smooth Downspouts ..... 8

Smooth Elbows ..... 8

Snips ..... 21

Solid Copper Flat Sheets ..... 6

Splash Blocks ..... 18

Straight Snips ..... 21

Stamped Bracket, 5800 Series ..... 14

**T**

Touch-Up Paint ..... 20

T-Strap, 9000 Series ..... 13

Torpedo Level ..... 22

Trough Mate ..... 23

**U**

Underground Drainage & Adaptors ..... 18

**W**

Wedges for Reverse Bead Half Round, Gutter ..... 15




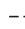




# JOB ESTIMATE FORM

## CUSTOMER INFORMATION

Name \_\_\_\_\_  
 Address \_\_\_\_\_  
 City, State Zip \_\_\_\_\_  
 Home Phone \_\_\_\_\_  
 Work Phone \_\_\_\_\_

## JOB INFORMATION

Gutter Color \_\_\_\_\_ INITIAL  
 K-Style  5"  6"  7" Half Round  6"  
 Downspout Color \_\_\_\_\_ INITIAL  
 Round  3"  4" Rectangle  2"x3"  3"x4"  4"x5"  
 Roof Type \_\_\_\_\_ Fascia Type \_\_\_\_\_  
 Walkable  Y  N  
 Stories  1  2  3+ Remove Existing  Y  N Haul Away  Y  N

 DOWN SPOUT	 GUTTER
 SPLASH GUARD	 EXISTING GUTTER
 SPLASH BLOCK	 DIVERTER
 DROP OUTLET	 ELEVATION CUT

GUTTER _____	
END CAPS _____	
RIGHT _____	
LEFT _____	
DOWNSPOUT _____	
OUTLETS _____	
ELBOWS _____	
OFFSETS _____	
2" _____	
4" _____	
6" _____	
MITERS _____	
STRIP IS _____	
STRIP OS _____	
BAY IS _____	
BAY OS _____	
BOX IS _____	
BOX OS _____	
HANGERS _____	
FLASHING _____	
WEDGES _____	
DIVERTER _____	

PAYMENT TERMS \_\_\_\_\_ SUB TOTAL \$ \_\_\_\_\_  
 SPECIAL TERMS \_\_\_\_\_  
 CREDIT CARD NO. \_\_\_\_\_ - \_\_\_\_\_ - \_\_\_\_\_ - \_\_\_\_\_ EXP DATE \_\_\_\_\_ SALES TAX \$ \_\_\_\_\_  
MM/DD/YYYY  
 NAME ON CARD \_\_\_\_\_ TOTAL \$ \_\_\_\_\_  
 BILLING ZIP CODE \_\_\_\_\_ BALANCE: CHARGE CREDIT CARD/CHECK \_\_\_\_\_ LESS DEPOSIT \$ \_\_\_\_\_  
 JOB READY TO INSTALL?  Y  N MISC. NOTES \_\_\_\_\_ BALANCE DUE \$ \_\_\_\_\_

CUSTOMER SIGNATURE \_\_\_\_\_ PRINTED NAME \_\_\_\_\_ DATE \_\_\_\_\_  
MM/DD/YYYY





**Serving the Seamless Gutter Industry Since 1972**

15409 Long Vista Drive  
Austin, TX 78728

Phone: 866-522-1696  
Fax: 800-295-2702

[www.senox.com](http://www.senox.com)  
[senoxinfo@senox.com](mailto:senoxinfo@senox.com)