

SEAMOX[®]

Proudly Serving the Seamless Gutter Industry Since 1972



2023 Product Catalog

PAINT & METAL SELECTION

Backed By Senox's 50 Year Paint Warranty

TRADITIONAL PAINTED ALUMINUM

Factory Baked Finish • Flexible for Roll Forming • Exterior Durability



001 - 30° White



002 - Royal Brown



003 - Antique Ivory



004 - Black



005 - Raffia Beige



006 - Beaver Brown



007 - Classic Cream



008 - Clay



009 - Colonial Blue



010 - Sherwood Green



011 - Musket Brown



013 - Wicker



014 - Dove Gray



015 - Almond



017 - Linen



018 - Light Bronze



019 - Tuxedo Gray



020 - Heritage Cream



021 - Colonial Gray



022 - Buckskin Brown



023 - 80° White



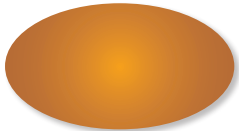
024 - Colonial Red



025 - Dark Bronze



026 - Herringbone



027 - Copper Metallic

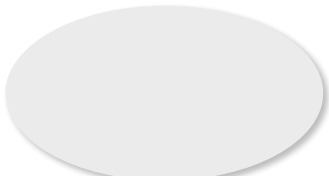


028 - Paint Grip Metallic

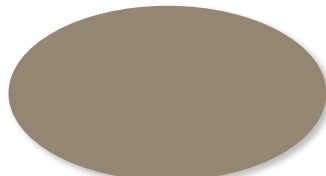
Colors shown may vary from actual material

ArmerTOUGH PAINTED ALUMINUM

Exclusive Product • Abrasion Resistant • Reduces Appearance of Staining



130 - Satin White



131 - Wood Beige



132 - Cameo

DuelTone® PAINTED ALUMINUM

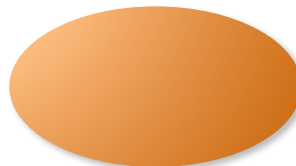
Created Through a Specialized Two-Coat Process
High Performance Exterior Finish



129 - Rustic Copper

PREMIUM METALS

3/4 Hard 16 oz. Copper
26 ga. Galvalume Plus Steel



890 - Solid Copper



920 - Galvalume Plus Steel

ShadowBAK
wash coat®
Non-Reflective Disappearing Wash Coat

Found on the Interior of Senox Painted Aluminum Gutters

ShadowBAK® is a washcoat specially formulated by Senox that gives the inside of the gutter a non-reflective finish. The anodized bronze appearance provides the vanishing properties of a black shadow and erases the transition lines from the gutter to the roof.

TABLE OF CONTENTS

COIL

Seamless Gutter Coil

p.4

GUTTER

End Caps for K-Style
Miters for K-Style

p.4

Outlets for Flat Bottom Gutter
Black MAX® Punch Paks for Flat Bottom Gutter
Black MAX® Mini Punch Paks for Flat Bottom Gutter
Black MAX® Punch Replacement Accessories

p.5

Flashing
16 oz. Solid Copper Flat Sheets
Gutter Wedges for K-Style

p.6

DOWNSPOUT

Rectangular Downspouts
Rectangular Elbows
Rectangular Offsets

p.7

Round Downspouts
Round Elbows
Round Offsets

p.8

3x4 Smooth Downspouts
3x4 Smooth Elbows

p.9

Downspout Accessories
Downspout Hangers

p.10

K-STYLE HANGERS

K-Style Internal Hangers

p.11

HALF ROUND GUTTER

Reverse Bead Half Round Gutter Sections
End Caps for Half Round
Miters for Half Round
Outlets for Half Round
Black MAX® Mini Punch Pak for Half Round
Gutter Wedges for Reverse Bead Half Round

p.14

Reverse Bead Half Round Internal Hangers
Half Round External Hangers

p.15

GUTTER GUARDS

Aluminum Expanded Wire Gutter Guard
Powder Coated Expanded Wire Gutter Guard
Perforated Gutter Guard

p.16

Stainless Steel Metal Mesh Gutter Guard
Louvered Gutter Guard
Solid Gutter Guard

p.17

DRAINAGE

Splash blocks
FLEX-Drain® Underground Drainage & Adaptors
Universal Drainage & Adaptors

p.18

FASTENERS

Rivets #42 x 1/8"
#8 Screws

p.19

Senox SpeedMaster™ Screws
Nails, Drive Pins, & Anchors

PAINT & SEALANT

Touch-Up Paint
Sealant - Nitrile Rubber Base
Sealant - Tripolymer Base
Sealant - SBR Rubber Base

p.20

TOOLS

Aviation Snips
Offset Snips
Regular Pattern Snips
Straight Snips
Circular "Duckbill" Snips
Combination Snips
End Cap Crimpers
Downspout Crimpers

p.21

Hand Seamers
Drivers, Leveling & Caulking
Cutting & Drilling

p.22

Ladder Accessories
Miscellaneous Accessories
Joints

p.23

RAIN CHAINS

Rain Chains

p.24

CONDUCTOR HEADS

Conductor Heads
Special Order Accessories

p.25

GUTTER MACHINES

Barracuda® Gutter Machines
Barracuda® Gutter Machine Options

p.26

Senox Licensed Products

p.27

INDEX

p.29



Serving the Seamless Gutter Industry Since 1972

LARGEST INVENTORY IN-STOCK

- Complete 5" & 6" K-Style and 6" Half Round product lines
- Dependable order fulfillment & delivery

COMPREHENSIVE COLOR SELECTION

- 26 Painted aluminum colors, galvalume plus steel, & solid copper
- 3 Exclusive Armor Tough® painted aluminum colors
- Exclusive Duel Tone painted aluminum color
- All backed by Senox's 50 year paint warranty

GUTTER ACCESSORIES

- Hidden hangers and half round internal & external hangers
- Outlets, offsets, miters, conductor heads, & more

HIGHEST QUALITY PRODUCTS

- State-of-the-art manufacturing equipment ensures products are of the highest quality
- Senox manufactured products are made in North America

SUPERIOR PACKAGING

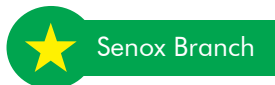
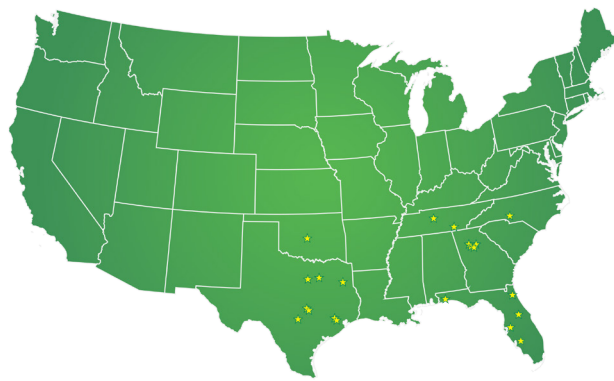
- High grade cardboard used for all boxes
- Packaging specific to each product, no excess space for product to shift
- Boxes are sealed using staples vs. tape

- GUTTER MACHINES** • Comprehensive gutter machine service
- 3 Year parts & 1 year electrical warranty on all Senox gutter machines

"We service the seamless gutter industry. That's all we do. If it has to do with gutters, we're either doing it, thinking about doing it, or planning to do it. We're thinking about gutters all the time."

—A.B. Walters
Founder/Chairman of the Board





SENOX BRANCH LOCATIONS

E-COMMERCE

www.SenoxOnline.com
Ph: 800-722-6958
Fax: 888-804-4035

REGION 1

AUSTIN

12112 Boardwalk Dr. STE-B
Austin, TX 78729
Ph: 512-582-1331
Fax: 512-582-1333
Rep: Rick Coffelt
512-896-6834

DALLAS

3236 Garden Brook St.
Farmers Branch, TX 75234
Ph: 972-243-7272
Fax: 972-243-7273
Rep: Rickey Hoffman
469-332-9396

FORT WORTH

5204-D Airport Fwy.
Fort Worth, TX 76117
Ph: 817-831-4900
Fax: 817-831-4901
Rep: Rickey Hoffman
469-332-9396

GARLAND

3301 Wood Dr Ste #400
Garland, TX 75041
Ph: 469-573-2233
Fax: 469-573-2204
Rep: Rickey Hoffman
469-332-9396

HOUSTON CENTRAL

4466 W 12th St.
Houston, TX 77055
Ph: 713-316-9802
Fax: 713-316-9807
Rep: Guillermo Morales
713-823-9289

HOUSTON NORTH

100 Northpark Central Dr. #400
Houston, TX 77073
Ph: 281-443-0420
Fax: 281-443-0490
Rep: Guillermo Morales
713-823-9289

LONGVIEW

808-B Jordan Valley Rd.
Longview, TX 75604
Ph: 903-295-9555
Fax: 903-295-9797
Rep: Rick Coffelt
512-896-6834

OKLAHOMA CITY

1340 Metropolitan Ave.
Oklahoma City, OK 73108
Ph: 405-948-7464
Fax: 405-948-6287
Rep: Rick Coffelt
512-896-6834

SAN ANTONIO

3816 Binz-Engelman Rd. B-111
San Antonio, TX 78218
Ph: 210-514-1173
Fax: 210-514-1175
Rep: Guillermo Morales
713-823-9289

REGION 2

CHATTANOOGA

3475-C 8th Ave.
Chattanooga, TN 37407
Ph: 423-698-0050
Fax: 423-698-3146
Rep: Rob Vail
615-653-6941

FULTON

555-C Wharton Circle
Atlanta, GA 30336
Ph: 404-691-9400
Fax: 404-691-0094
Rep: Sam Henley
404-423-1928

KENNESAW

3690 Kennesaw S. Ind. Dr.
Kennesaw, GA 30144
Ph: 770-795-8500
Fax: 770-795-9991
Rep: Sam Henley
404-423-1928

LOUISVILLE

4850 Crittenden Drive
Suite 1A
Louisville, KY 40209
Ph: 502-324-1860
Fax: 502-325-1300
Rep: Rob Vail
615-653-6941

NASHVILLE

302 Space Park Dr. S.
Nashville, TN 37211
Ph: 615-333-3383
Fax: 615-333-3374
Rep: Rob Vail
615-653-6941

SUWANEE

2970 Shawnee Ridge Ct.
#200
Suwanee, GA 30024
Ph: 770-476-4141
Fax: 770-476-4175
Rep: Sam Henley
404-423-1928

TUCKER*

4662 North Royal Atlanta Dr.
Tucker, GA 30084
Ph: 404-292-6181
Fax: 404-292-6521
Rep: Sam Henley
404-423-1928

REGION 3

FORT MYERS

6361 Topaz Court
Fort Myers, FL 33966
Ph: 239-217-6303
Fax: 239-217-3513
Rep: Mike Green
239-990-7002

JACKSONVILLE

6858 Phillips Parkway Dr. S.
Jacksonville, FL 32256
Ph: 904-880-2192
Fax: 904-880-7256
Rep: Bret Marlin
813-734-4428

ORLANDO

473 Presidents Dr.
Orlando, Florida 32809
Ph: 407-734-2148
Fax: 407-369-4229
Rep: Bret Marlin
813-734-4428

PENSACOLA

3855 N Palafox St
Pensacola, FL 32505
Ph: 850-701-8192
Fax: 850-303-2682
Rep: Mike Green
239-990-7002

TAMPA

201-C Kelsey Ln.
Tampa, Florida 33619
Ph: 813-623-6178
Fax: 813-626-1306
Rep: Bret Marlin
813-734-4428

REGION 4

CHARLOTTE

3500 Woodpark Blvd Ste G
Charlotte, NC 28206
Ph: 704-371-5043
Fax: 704-371-5077
Rep: Curt Dyer
512-699-5695

*Formerly Clarkston

SEAMLESS GUTTER COIL

Senox seamless gutter coil is available in painted aluminum (all 26 traditional Senox colors), copper, or galvalume+ (all painted coil comes backed by our 50 year paint warranty.)

11 7/8"
 .027" Aluminum
 part # 1111950XXX

15"
 .027" Aluminum
 part # 1115050XXX

Available in: 26 Traditional, 1 Duel Tone®, 3 Armor Tough®

11 7/8"
 .032" Aluminum
 part # OS11119710XXX

15"
 .032" Aluminum
 part # OS11150710XXX

Available in: 26 Traditional, 1 Duel Tone®, 3 Armor Tough®

11 7/8"
 16 oz. Solid Copper
 part # 1111951890

15"
 16 oz. Solid Copper
 part # 1115051890

26 ga. Galvalume Plus Steel
 part # 1111950920

26 ga. Galvalume Plus Steel
 part # 1115050920

18"
 .032" Aluminum
 part # OS11180710XXX

18"
 16 oz. Solid Copper
 part # 1118051890

26 ga. Galvalume Plus Steel
 part # 1118050920



END CAPS FOR K-STYLE

Packaged 25R/25L Units/Box

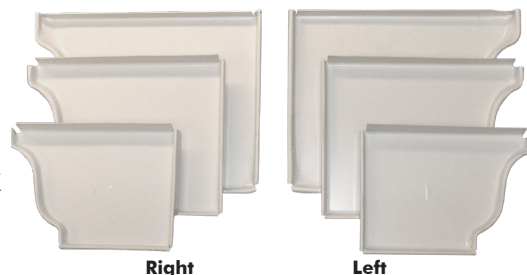
Senox end caps provide a tap on fit to easily close the ends of the gutter; uses painted Senox coil to ensure a perfect match every time.

5" Right or Left
 right - part # 2215030XXX
 left - part # 2215050XXX

6" Right or Left
 right - part # 2216030XXX
 left - part # 2216050XXX

7" Right or Left
 right - part # 2217030XXX
 left - part # 2217050XXX

Available in: 26 Traditional, 1 Duel Tone® (129), 3 Armor Tough®, 16 oz. Solid Copper (890), 26 ga. Galvalume Plus Steel (920)



MITERS FOR K-STYLE

Packaged 20 Units/Box

The fastest way to install corners, and available in the full range of Senox colors to perfectly match Senox gutters.

5", 90°, Strip, O/S or I/S
 O/S - part # 2315110XXX
 I/S - part # 2315130XXX

6", 90°, Strip, O/S or I/S
 O/S - part # 2316110XXX
 I/S - part # 2316130XXX

7", 90°, Strip, O/S or I/S
 O/S - part # 2317110XXX
 I/S - part # 2317130XXX

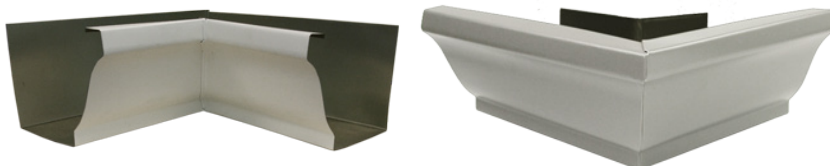
5", 45°, Bay, O/S or I/S
 O/S - part # 2315310XXX
 I/S - part # 2315330XXX

6", 45°, Bay, O/S or I/S
 O/S - part # 2316310XXX
 I/S - part # 2316330XXX

7", 45°, Bay, O/S or I/S
 O/S - part # 2317310XXX
 I/S - part # 2317330XXX

5", 90°, Box, O/S or I/S
 O/S - part # 2315610XXX
 I/S - part # 2315630XXX

6", 90°, Box, O/S or I/S
 O/S - part # 2316610XXX
 I/S - part # 2316630XXX



Available in: 26 Traditional, 1 Duel Tone®, 3 Armor Tough®, 16 oz. Solid Copper (890), 26 ga. Galvalume Plus Steel (920)

COLOR SELECTION

Traditional Painted Aluminum

- | | | |
|-------------------|--------------------|-------------------------|
| 001 30° White | 010 Sherwood Green | 021 Colonial Gray |
| 002 Royal Brown | 011 Musket Brown | 022 Buckskin Brown |
| 003 Antique Ivory | 013 Wicker | 023 80° White |
| 004 Black | 014 Dove Gray | 024 Colonial Red |
| 005 Raffia Beige | 015 Almond | 025 Dark Bronze |
| 006 Beaver Brown | 017 Linen | 026 Herringbone |
| 007 Classic Cream | 018 Light Bronze | 027 Copper Metallic |
| 008 Clay | 019 Tuxedo Gray | 028 Paint Grip Metallic |
| 009 Colonial Blue | 020 Heritage Cream | |

Duel Tone® Painted Aluminum

- 129 Rustic Copper

Armor Tough® Painted Aluminum

- 130 Satin White
- 131 Wood Beige
- 132 Cameo

Metal Selection

- 099 Mill Finish Aluminum
- 870 Brass
- 890 Solid Copper
- 910 Galvanized Steel
- 920 Galvalume Plus Steel
- 968 Copper Plus

OUTLETS FOR FLAT BOTTOM GUTTER

Senox outlets include an exclusive dimple for easy 'pop in' installation when used in tandem with our outlet punch- helps provide a snug fit when installing the outlet in the bottom of the gutter.

2 3/8" Round
250 pcs/box
part # 2612110004



Available in: Black (004)

2 3/4" Round
250 pcs/box
part # 2613110004

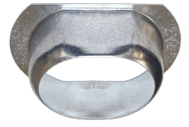


3" Oval
100 pcs/box
part # 263311XXXX



Available in: Black (004), Solid Copper (890), Galv Steel (910)

4" Oval
50 pcs/box
part # 263411XXXX



2" x 3" Rectangle
100 pcs/box
part # 2643110004



Available in: Black (004)

3" x 4" Rectangle
50 pcs/box
part # 2644120004



4" x 5" Rectangle
50 pcs/box
part # 2645140XXX



Available in: Aluminum (099), Solid Copper (890), Galv Steel (910)

BLACK MAX® PUNCH PAKS FOR FLAT BOTTOM GUTTER

Everything you need to install the best gutter outlets anywhere; the Punch Pak includes Punch, 1 1/2" Hole Saw, 1/4" Driver Power Bit, and outlets- all for the same price as just ordering the outlets by themselves!

2 3/8" Round
750 Outlets
part # 2612119004

2 3/4" Round
750 Outlets
part # 2613119004

2" x 3" Rectangle
900 Outlets
part # 2643119004

3" Oval
900 Outlets
part # 2633119004

4" Oval
450 Outlets
part # 2634119004

3" x 4" Rectangle
450 pcs/box
part # 2644129004

Includes: Punch, 1 1/2" Hole Saw, 1/4" Driver Power Bit, Outlets



BLACK MAX® MINI PUNCH PAKS FOR FLAT BOTTOM GUTTER

If you're just doing a job or two and don't need as many outlets as our standard Punch Pak, you need the Mini Punch Pak. Includes Punch, 1 1/2" Hole Saw, 1/4" Driver Power Bit, and outlets.

2 3/8" Round
35 Outlets
part # 2612118004

2 3/4" Round
35 Outlets
part # 2613118004

2" x 3" Rectangle
100 Outlets
part # 2643118004

3" Oval
100 Outlets
part # 2633118004

4" Oval
50 Outlets
part # 2634118004

3" x 4" Rectangle
50 pcs/box
part # 2644128004

Includes: Punch, 1 1/2" Hole Saw, 1/4" Driver Power Bit, Outlets



BLACK MAX® PUNCH REPLACEMENT ACCESSORIES

Hole Saw 1 1/2", for Punch
part # 8926928



Driver Bit 1/4", for Punch
part # 8950812

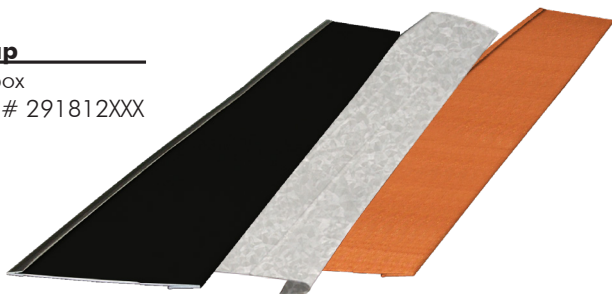


FLASHING

No fasteners needed; Senox Drip Caps help keep water from running behind the gutter, protecting your customer's roof.

Drip Cap

30 pcs/box
4' - part # 291812XXX

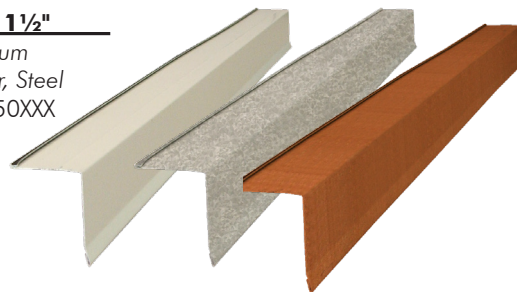


Available in: Black (004), 16 oz. Solid Copper (890),
26 ga. Galvalume Plus Steel (920)

Senox Drip Edges have the largest color selection in the marketplace today- available in all Senox colors.

Drip Edge, 1 1/2" x 1 1/2"

30 pcs/box - Aluminum
15 pcs/box - Copper, Steel
10' - part # 2910150XXX



Available in: 26 Traditional, 1 Duel Tone®(129), 3 Armor Tough®,
16 oz. Solid Copper (890), 26 ga. Galvalume Plus Steel (920)

16 OZ. SOLID COPPER FLAT SHEETS

3' x 10'

36 units/pallet
part # 133655890

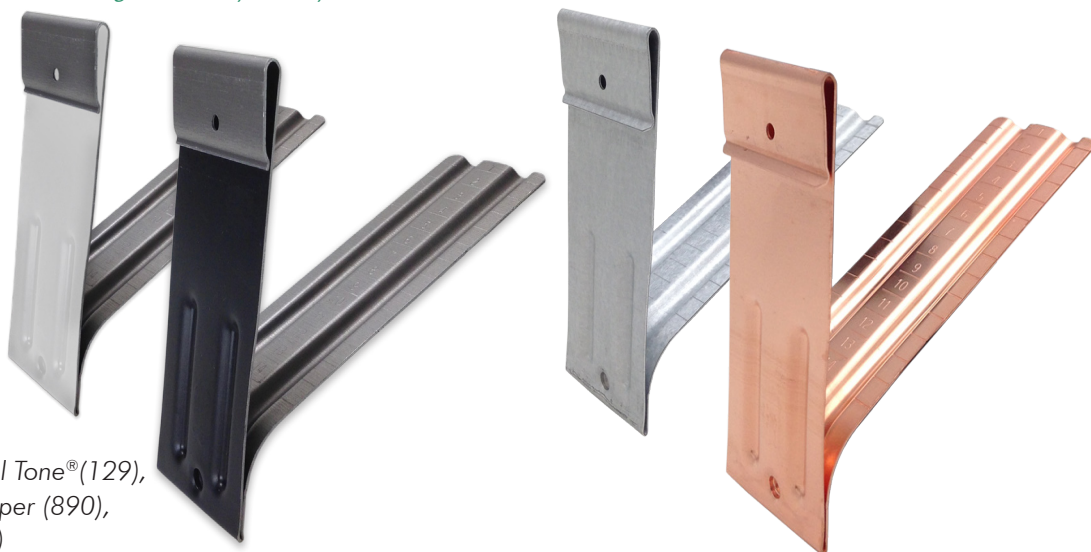


GUTTER BUMPERS FOR K-STYLE

Compared to traditional gutter wedges, Senox Gutter Bumpers are faster & more cost effective- and with premarked lines, cutting accurately is easier than ever. All our bumpers feature ribs to provide extra strength and the SB bumper also fits 5", 6", & 7" K-Style gutters, unlike traditional wedges which you buy to size.

Gutter Bumper® SB

100 pcs/box
part # 2928150XXX



Available in: 26 Traditional, 1 Duel Tone®(129),
3 Armor Tough®, 16 oz. Solid Copper (890),
26 ga. Galvalume Plus Steel (920)

For Straight Back
Gutter

RECTANGULAR DOWNSPOUTS

Senox rectangular downspouts feature side crimp instead of the usual corner crimp, which allows for a cleaner transition.

2" x 3" x 8'

10 units/box
part # 4143240XXX

Available in: 26 Traditional, 1 Duel Tone®, 3 Armor Tough®

3" x 4" x 8'

10 units/box
part #4144240XXX

2" x 3" x 10'

10 units/box - Aluminum
5 units/box - Copper & Steel
part # 4143250XXX

3" x 4" x 10'

10 units/box - Aluminum
5 units/box - Copper & Steel
part # 4144250XXX

4" x 5" x 10'

6 units/box
part # 4145250XXX

Available in: 26 Traditional, 1 Duel Tone® (129), 3 Armor Tough®, 16 oz. Solid Copper (890), 26 ga. Galvalume Plus Steel (920)



RECTANGULAR ELBOWS

2" x 3", A or B, 75°

36 pcs/box
A - part # 4243270XXX
B - part # 4243770XXX

3" x 4", A or B, 75°

20 pcs/box
A - part # 4244270XXX
B - part # 4244770XXX

4" x 5", A or B, 75°

12 pcs/box
A - part # 4245270XXX
B - part # 4245770XXX

2" x 3", A, 22.5°

72 pcs/box
part # 42432200XXX

3" x 4", A, 22.5°

40 pcs/box
part # 42442200XXX

4" x 5", A, 22.5°

12 pcs/box
part # 42452200XXX

2" x 3", A, 45°

42 pcs/box
part # 42432400XXX

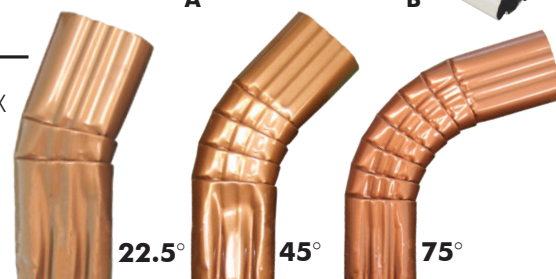
3" x 4", A, 45°

30 pcs/box
part # 42442400XXX

4" x 5", A, 45°

12 pcs/box
part # 42452400XXX

Available in: 26 Traditional, 1 Duel Tone® (129), 3 Armor Tough®, 16 oz. Solid Copper (890), 26 ga. Galvalume Plus Steel (920)



RECTANGULAR OFFSETS

2" x 3" x 2"

24 pcs/box
part # 4343220XXX

2" x 3" x 4"

24 pcs/box
part # 4343240XXX

2" x 3" x 6"

24 pcs/box
part # 4343260XXX

3" x 4" x 2"

15 pcs/box
part # 4344220XXX

3" x 4" x 4"

15 pcs/box
part # 4344240XXX

3" x 4" x 6"

15 pcs/box
part # 4344260XXX

Available in: 26 Traditional, 1 Duel Tone® (129), 3 Armor Tough®, 16 oz. Solid Copper (890), 26 ga. Galvalume Plus Steel (920)



MADE TO ORDER

If you need a less common bend, we've got you covered!
Custom bend elbows are available upon request.

2" x 3", A or B, 90°

36 pcs/box
A - part # 424329XXX
B - part # 424379XXX

3" x 4", A or B, 90°

18 pcs/box
A - part # 424429XXX
B - part # 424479XXX

2" x 3", B, 45°

42 pcs/box
part # 424374XXX

3" x 4", B, 45°

25 pcs/box
part # 424474XXX

Available in: 30° White (001)



3" X 4" SMOOTH DOWNSPOUTS

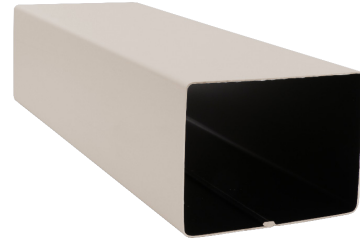
Packaged 5 Units/Box

Available in every Senox color, Senox 3 x 4 smooth downspouts are the perfect compliment to our Boxer gutters (and offer a different option for K-Style gutters, too!)

10' Downspout

5 pcs/box
All colors
Part # 413425xxx

Available in: 26 Traditional, 1 Duel Tone® (129), 3 Armor Tough®, 16 oz. Solid Copper (890), 26 ga. Galv Steel (920)



3" X 4" SMOOTH ELBOWS

22.5° 'A' Elbows

25 pcs/box
All colors
Part # 423422xxx



45° 'A' Elbows

20 pcs/box
All colors
Part #423424xxx



75° 'A' Elbows

15 pcs/box
All colors
Part #4234270xxx



75° 'B' Elbows

15 pcs/box
All colors
Part #4234770xxx



Available in: 26 Traditional, 1 Duel Tone®, 3 Armor Tough®, 16 oz. Solid Copper, 26 ga. Galvalume Plus Steel

ROUND DOWNSPOUTS

Packaged 5 Units/Box

Available in every Senox color, Senox round downspouts are the perfect compliment to our Half Round gutters (and offer a different option for K-Style gutters, too!)

3" x 10' Round
part # 4153250XXX

4" x 10' Round
part # 4154250XXX

Available in: 26 Traditional, 1 Duel Tone® (129), 3 Armor Tough®, 16 oz. Solid Copper (890), 26 ga. Galv Steel (920)



ROUND ELBOWS

3" Round, 75°
10 units/box
part # 4253270XXX

4" Round, 75°
10 units/box
part # 4254270XXX

3" Round, 22.5°
12 units/box
part # 4253220XXX

4" Round, 22.5°
12 units/box
part # 4254220XXX

3" Round, 45°
12 units/box
part # 4253240XXX

4" Round, 45°
10 units/box
part # 4254240XXX

Available in: 26 Traditional, 1 Duel Tone®, 3 Armor Tough®, 16 oz. Solid Copper, 26 ga. Galvalume Plus Steel

3" Round, 90°
8 units/box
part # 4253290XXX

4" Round, 90°
8 units/box
part # 4254290XXX

Available in: 30° White (001), 16 oz. Solid Copper (890), 26 ga. Galvalume Plus Steel (920)



22.5°



45°



75°

ROUND OFFSETS

3" Round x 2"
6 pcs/box
part # 4353220XXX

3" Round x 4"
6 pcs/box
part # 4353240XXX

3" Round x 6"
4 pcs/box
part # 4353260XXX

4" Round x 2"
4 pcs/box
part # 4354220XXX

4" Round x 4"
4 pcs/box
part # 4354240XXX

4" Round x 6"
4 pcs/box
part # 4354260XXX

Available in: 26 Traditional, 1 Duel Tone® (129), 3 Armor Tough®, 16 oz. Solid Copper (890), 26 ga. Galvalume Plus Steel (920)



DOWNSPOUT ACCESSORIES

2" Round Elbow

1 unit/box
part # OS4252370001



Available in: 30° White (001)

Scupper

1 pcs/box
part # 496770001



DOWNSPOUT HANGERS

Available in all Senox colors, Quarter Moon hangers give a decorative finish to your downspout installations.

Quarter Moon for Rectangular

For 2"X3" and 3"X4"
100 units/box
part # 4540650XXX



Quarter Moon for Round

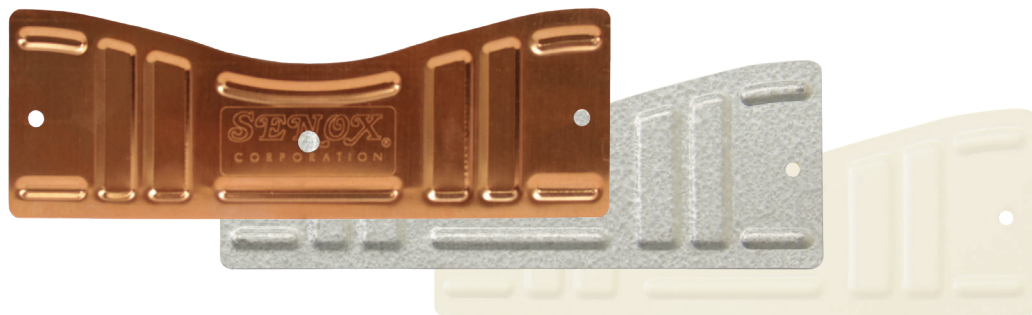
For 3" and 4"
100 units/box
part # 4541650XXX



Available in: 26 Traditional, 1 Duel Tone® (129), 3 Armor Tough®, 16 oz. Solid Copper (890), 26 ga. Galvalume Plus Steel (920)

Concealed for Rectangular

For 2"X3" and 3"X4"
100 units/box
part # 4535550XXX



Available in: 26 Traditional, 1 Duel Tone® (129), 3 Armor Tough®, 16 oz. Solid Copper (890), 26 ga. Galvalume Plus Steel (920)

K-STYLE INTERNAL HANGERS

1600 Series for 5", 6"

Aluminum .060 with or without clip

Our most economical .060 robust hanger (but still built to Senox's high standards)

100 pcs/box - Aluminum

5", no clip - part # 2416501099

5", w/clip - part # 2416531099

6", no clip - part # 2416601099

6", w/clip - part # 2416631099

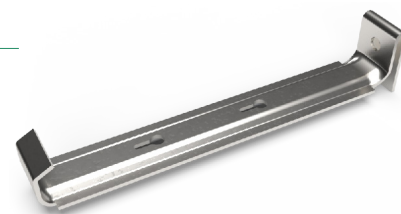
Mini-barrels - Aluminum

5", no clip - 1000 pcs - part # 2416504099

5", w/clip - 1000 pcs - part # 2416534099

6", no clip - 500 pcs - part # 2416603099

6", w/clip - 500 pcs - part # 2416633099



1800 Series for 5", 6"

Aluminum .047 with or without clip

The most cost efficient way to eliminate gutter rattle

100 pcs/box - Aluminum

5", no clip - part # 2418501099

5", w/clip - part # 2418531099

6", no clip - part # 2418601099

6", w/clip - part # 2418631099

Mini-barrels - Aluminum

5", no clip - 1000 pcs - part # 2418504099

5", w/clip - 1000 pcs - part # 2418534099

6", no clip - 500 pcs - part # 2418603099

6", w/clip - 500 pcs - part # 2418633099



2100 Series for 5", 6"

Aluminum .060 with or without clip

Our top seller! Senox's strongest hanger to come without a pre-loaded screw.

100 pcs/box - Aluminum

5", no clip - part # 2421501099

5", w/clip - part # 2421531099

6", no clip - part # 2421601099

6", w/clip - part # 2421631099

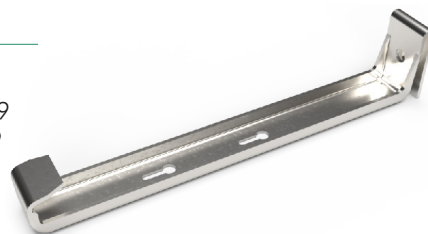
Mini-barrels - Aluminum

5", no clip - 1000 pcs - part # 2421504099

5", w/clip - 1000 pcs - part # 2421534099

6", no clip - 500 pcs - part # 2421603099

6", w/clip - 500 pcs - part # 2421633099



2300 Series for 5", 6"

Aluminum .047 with or without clip

Copper and Galvalume+ .047 with or without clip

A wider hanger, comes with 3 pre-drilled holes (so breaking a screw is no big deal!)

100 pcs/box - Aluminum, Solid Copper, Galv Steel

5", no clip - part # 2423501XXX

5", w/clip - part # 2423531XXX

6", no clip - part # 2423601XXX

6", w/clip - part # 2423631XXX

Mini-barrels - Aluminum

5", no clip - 500 pcs - part # 2423503099

5", w/clip - 500 pcs - part # 2423533099

6", no clip - 250 pcs - part # 2423602099

6", w/clip - 250 pcs - part # 2423632099



2800 Series for 5", 6"

Aluminum .047 with or without clip, #10 x 1.5" screw with T17 point, hi-low thread, 1000 hour black ruspert

Copper .050 with or without clip, #10 x 1.5" screw with T17 point, hi-low thread, stainless steel

Galv. Steel .047 with or without clip, #10 x 1.5" screw with T17 point, hi-low thread, 1000 hour black ruspert

Comes with Rattler™ front lip, and preloaded with 1.5" screw and washer for convenience.

100 pcs/box - Aluminum, Solid Copper

5", no clip - part # 2428501XXX

5", w/clip - part # 2428531XXX

6", no clip - part # 2428601XXX

6", w/clip - part # 2428631XXX

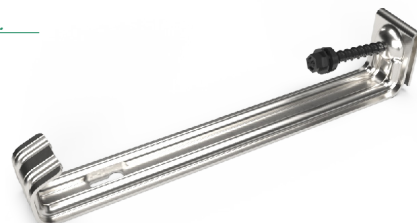
Mini-barrels - Aluminum

5", no clip, 500 pcs - part # 2428503099

5", w/clip, 500 pcs - part # 2428533099

6", no clip, 250 pcs - part # 2428602099

6", w/clip, 250 pcs - part # 2428632099



100 pcs/box - Galv Steel

5", no clip - part # 2428501920

5", w/clip - part # 2428531920

6", no clip - part # 2428601920

6", w/clip - part # 2428631920

K-STYLE INTERNAL HANGERS

2900 Series for 5", 6"

Aluminum .047 with or without clip, #10 x 2" screw with T17 point, hi-low thread, 1000 hour black ruspert
Copper .050 with or without clip, #10 x 2" screw with T17 point, hi-low thread, stainless steel
Galv. Steel .047 with or without clip, #10 x 2" screw with T17 point, hi-low thread, 1000 hour black ruspert

Comes with Rattler® front lip, and preloaded with 2" screw for convenience.

100 pcs/box - Aluminum, Solid Copper, Galv Steel
 5", no clip - part # 2429501XXX
 5", w/clip - part # 2429531XXX
 6", no clip - part # 2429601XXX
 6", w/clip - part # 2429631XXX

Mini-barrels - Aluminum
 5", no clip, 500 pcs - part # 2429503099
 5", w/clip, 500 pcs - part # 2429533099
 6", no clip, 250 pcs - part # 2429602099
 6", w/clip, 250 pcs - part # 2429632099



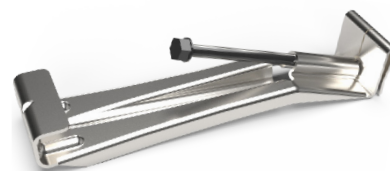
3400 Series for 5", 6"

Aluminum .047 with or without clip, #10 x 3" screw with T17 point, hi-low thread, 1000 hour black ruspert

Strong & Convenient, comes preloaded with 3" screw.

100 pcs/box - Aluminum
 5", no clip - part # 2434551099
 5", w/clip - part # 2434571099
 6", no clip - part # 2434651099
 6", w/clip - part # 2434671099

Mini-barrels - Aluminum
 5", no clip, 500 pcs - part # 2434553099
 5", w/clip, 500 pcs - part # 2434573099
 6", no clip, 250 pcs - part # 2434652099
 6", w/clip, 250 pcs - part # 2434672099



3600 Series for 5", 6"

Aluminum .047 with or without clip, #12 x 3" screw with T17 point, hi-low thread, 1000 hour black ruspert

Strong & Convenient, comes preloaded with #12 screw.

100 pcs/box - Aluminum
 5", no clip - part # 2436551099
 5", w/clip - part # 2436571099
 6", no clip - part # 2436651099
 6", w/clip - part # 2436671099

Mini-barrels - Aluminum
 5", no clip, 500 pcs - part # 2436553099
 5", w/clip, 500 pcs - part # 2436573099
 6", no clip, 250 pcs - part # 2436652099
 6", w/clip, 250 pcs - part # 2436672099



3800 Series for 5", 6"

Aluminum .047, wider, with or without clip, #12 x 3" screw with T17 point, hi-low thread, 1000 hour black ruspert

A more robust version of the 3600 hanger, comes preloaded with #12 screw.

100 pcs/box - Aluminum, Solid Copper, Galvanized Steel
 5", no clip - part # 2438551099
 5", w/clip - part # 2438571XXX
 6", no clip - part # 2438651099
 6", w/clip - part # 2438671XXX

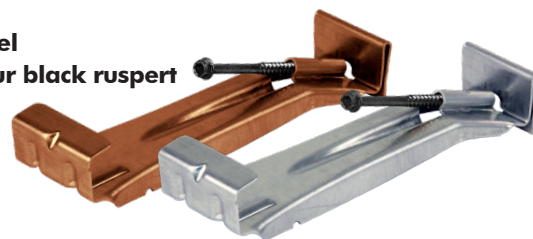


3800 Series for 7"

Copper .050, with clip, #12 x 3" screw with T17 point, hi-low thread, stainless steel
Galv. Steel .050, with clip, #12 x 3" screw with T17 point, hi-low thread, 1000 hour black ruspert

A more robust 7" version of the 3600 hanger, comes preloaded with #12 screw.

100 pcs/box - Solid Copper, Galvanized Steel
 7", w/clip - part # 2438771XXX



K-STYLE INTERNAL HANGERS

4000 Series for 5", 6"

Aluminum .055, with or without clip, #12 x 3.5" screw with T17 point, hi-low thread, 1000 hour black ruspert
Copper .050, with clip, #12 x 3.5" screw with T17 point, hi-low thread, stainless steel

Our strongest hanger, comes preloaded with #12 screw.

100 pcs/box - Aluminum, Solid Copper
 5", no clip- part # 2440551099
 5", w/clip - part # 2440571099 | 2440571890
 6", no clip- part # 2440651099 | 2440651890
 6", w/clip - part # 2440671099 | 2440671890

Mini-barrels - Aluminum
 5", no clip, 500 pcs - part # 2440553099
 5", w/clip, 500 pcs - part # 2440573099
 6", no clip, 250 pcs - part # 2440652099
 6", w/clip, 250 pcs - part # 2440672099



4200 Series for 7"

Aluminum .060, with or without clip, #12 x 3" screw with T17 point, twin lead thread, 1000 hour black ruspert
7", .060 thick version of the 3800 hanger- Strong & Convenient, comes preloaded with #12 screw.

100 pcs/box - Aluminum
 7", no clip - part # 2442761099
 7", w/clip - part # 2442771099



7000 Series for 7"

Aluminum .060, with or without clip, #12 x 3" screw with T17 point, twin lead thread, 1000 hour black ruspert
7", .060 thick version of the 3800 hanger- Strong & Convenient, comes preloaded with #12 screw.

100 pcs/box
 7", no clip- Aluminum- part # 2442731099
 7", no clip- Galv. Steel- part # 2442731910
 7", no clip- Stainless Steel- part # 2442731961



9000 Series

100 pcs/box - Aluminum, Solid Copper (890), Stainless Steel
 10" T-Strap - part # 2499001XXX



9700 Series for 5", 6"

100 pcs/box - Aluminum
 5", Vampire, w/strap - part # 2441511099
 5", Vampire (rod sold separately) - part # 2441561099
 6", Vampire, w/strap - part # 2441611099
 6", Vampire (rod sold separately) - part # 2441661099
 11" Vampire Rod - part # 2441001099



*Rod Sold Separately

REVERSE BEAD HALF ROUND INTERNAL HANGERS

5000 Series for 6"HR

Aluminum .060 with or without clip

100 pcs/box - Aluminum
6", w/clip - part # 2450631099
6", no clip - part # 2450611099

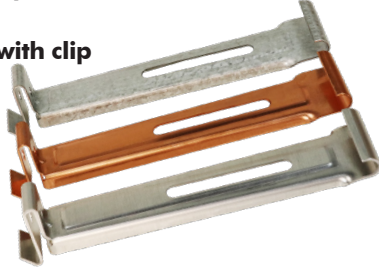


Designed specifically for Half Round internal hangers, includes an extended wedge clip that sits against the fascia, preventing the gutter from tipping forward.

5100 Series w/ Wedge for 6"

Aluminum .060, with clip
Copper .050, with clip
Galvalume Plus .040, with clip

100 pcs/box
part # 2451631XXX



Available in: Aluminum (099), Solid Copper (890), Galvalume Plus (920)

5300 Series w/ Wedge for 6"

Aluminum .060, with clip, #12 x 3" screw with T17 point, hi-low thread, 1000 hour black ruspert
Copper .050, with #12 x 3" screw with T17 point, hi-low thread, stainless steel
Galv. Steel .050, with clip, #12 x 3" screw with T17 point, hi-low thread, 1000 hour black ruspert

100 pcs/box
Aluminum part # 2453661099
Solid Copper part # 2453661890
Galv Steel part # 2453661920



HALF ROUND EXTERNAL HANGERS

6" #10 Combo w/Spring

50 pcs/box
part # 255004XXX



Available in: White (001), Brown (002), Dark Bronze (025), Solid Copper (890), Galv Steel (920)

6" Circle w/Spring, Nut, & Bolt

50 pcs/box
part # 255224XXX



Extra Spring

50 pcs/box
part # 255226XXX



Available in: White (001), Brown (002), Dark Bronze (025), Brass (870), Galv Steel (920)

#6 Shank for OG Crown Molding

50 pcs/box
part # 255106XXX



Available in: Solid Copper (890), Galv Steel (910)

#11 Shank Exposed Rafter 1/3 Pitch

50 units/box
part # 255111XXX



Available in: White (001), Brown (002), Solid Copper (890), Galv Steel (910)

#12 Shank Sheeting 1/3 Pitch

50 pcs/box
part # 255112XXX



#25 Shank Sheeting 1/2 Pitch

50 pcs/box
part # 255115XXX



Available in: Solid Copper (890), Galv Steel (910)

#30 Shank Adjustable Pitch w/Nut & Bolt

50 pcs/box
part # 255116XXX



Available in: White (001), Brown (002), Dark Bronze (025), Solid Copper (890), Galv Steel (910)

5800 Series

25 units/box
part # 2558721XXX



Available in: 26 Traditional, 1 Duel Tone®(129), 3 Armor Tough®, 16 oz. Solid Copper (890), 26 ga. Galvalume Plus Steel (920)

Extra Bolt w/Nut #10/24 x 3/4"

50 units/box
part # 255228XXX



Available in: Brass (870) Galv Steel (910)

Wrap Around w/Strap for 6"

50 units/box
part # 2450631XXX



Available in: Solid Copper (890), Galv Steel (910)

REVERSE BEAD HALF ROUND GUTTER SECTIONS

Packaged 5 Units/Box

Offer your customers specialty gutters without the investment of a dedicated half round machine.



6" x 10'

part # 2166051890

Available in: 16 oz. Solid Copper

Available in: 26 Traditional, 1 Duel Tone® (129), 3 Armor Tough®, 16 oz. Solid Copper (890), 26 ga. Galvalume Plus Steel (910)

END CAPS FOR HALF ROUND

Packaged 25 Units/Box

6" Right or Left

right - part # 2266030XXX
left - part # 2266050XXX



Right



Left

Available in: 26 Traditional, 1 Duel Tone® (129), 3 Armor Tough®, 16 oz. Solid Copper (890), 26 ga. Galvalume Plus Steel (910)

MITERS FOR HALF ROUND

Packaged 20 Units/Box

6", 90°, Strip, O/S or I/S

O/S - part # 2366110XXX
I/S - part # 2366130XXX



6", 45°, Bay, O/S or I/S

O/S - part # 2366310XXX
I/S - part # 2366330XXX



Available in: 26 Traditional, 1 Duel Tone® (129), 3 Armor Tough®, 16 oz. Solid Copper (890), 26 ga. Galvalume Plus Steel (910)

OUTLETS FOR HALF ROUND

Packaged 50 Units/Box

3" Round

part # 265364XXXX

Available in: White (001), Solid Copper (890), Galv Steel (910)



4" Half Round

part # 265444XXXX

Available in: 30° White (001), Black (004), Solid Copper (890), Galv Steel (910)



BLACK MAX® MINI PUNCH PAK FOR HALF ROUND

Everything you need to install half round outlets; the Mini Punch Pak includes Punch, 1 1/2" Hole Saw, 1/4" Driver Power Bit, and bulk savings on the outlets you need.

4" Half Round

10 Outlets
part # 2654448004

Includes: Punch, 1 1/2" Hole Saw, 1/4" Driver Power Bit, Outlets

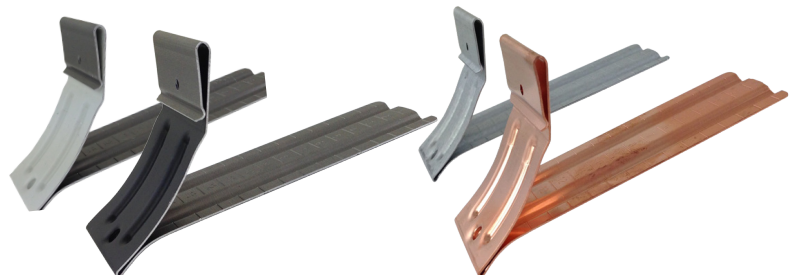


GUTTER WEDGES FOR REVERSE BEAD HALF ROUND

Gutter Bumper® HR

100 pcs/box
part # 2928660XXX

Available in: 30° White (001), Black (004), 16 oz. Solid Copper (890), 26 ga. Galvalume Plus Steel (910)

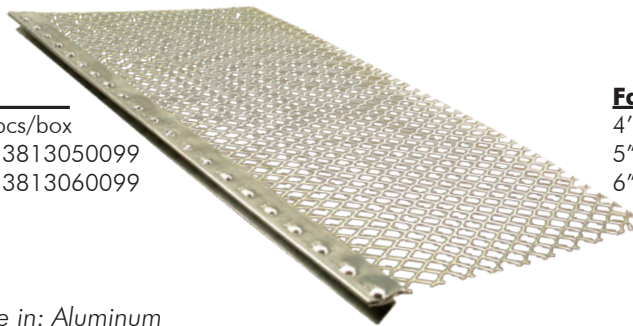


ALUMINUM EXPANDED WIRE GUTTER GUARD

Our most cost effective solution for keeping your customer's gutters debris-free.

Drop-In

4' pcs, 50 pcs/box
5" - part # 3813050099
6" - part # 3813060099



Fast Screen

4' pcs, 50 pcs/box
5" - part # 3815050099
6" - part # 3815060099



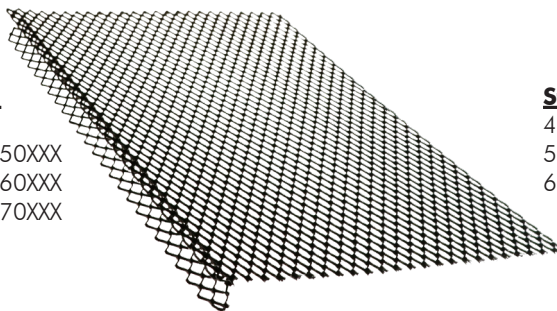
Available in: Aluminum

POWDER COATED EXPANDED WIRE GUTTER GUARD

Powder coated galvanized steel provides superior rust, rodent, and debris protection for decades to come.

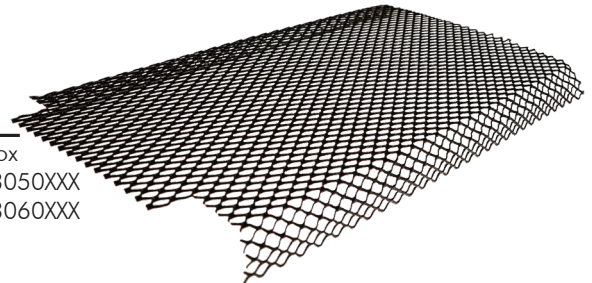
Roll Lock

4' pcs, 25 pcs/box
5" - part # 3821050XXX
6" - part # 3821060XXX
7" - part # 3821070XXX



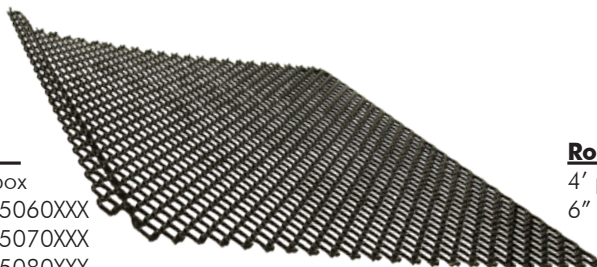
Step Lock

4' pcs, 25 pcs/box
5" - part # 3823050XXX
6" - part # 3823060XXX



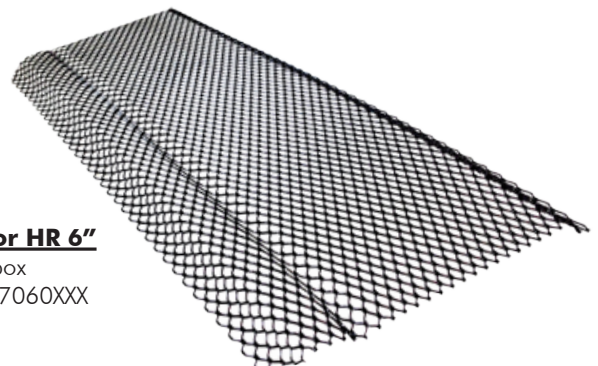
Flat Lock

4' pcs, 25 pcs/box
6" - part # 3825060XXX
7" - part # 3825070XXX
8" - part # 3825080XXX
9" - part # 3825090XXX



Round Lock for HR 6"

4' pcs, 25 pcs/box
6" - part # 3827060XXX



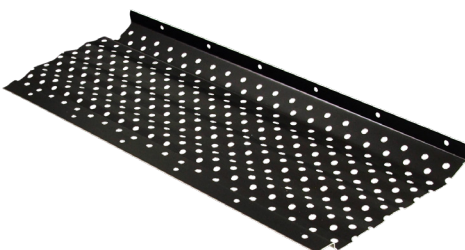
Available in: Black (004), Solid Copper (890)

PERFORATED GUTTER GUARD

Senox perforated gutter guards keep more debris from entering gutters and make cleaning them a breeze.

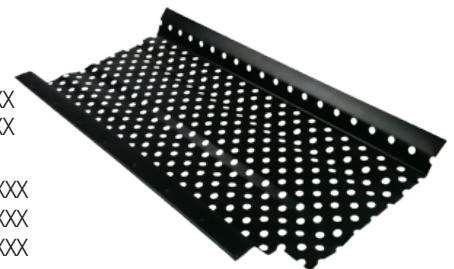
Eave N Flow

4' pcs, 50 pcs/box
5" - part # 3914050004
6" - part # 3914060004



Smart Flow

4' pcs, 50 pcs/box
5" x 4' - part # 3914000XXX
6" x 4' - part # 3914010XXX
10' pcs, 25 pcs/box
5" x 10' - part # 3914100XXX
6" x 10' - part # 3914110XXX
7" x 10' - part # 3914120XXX



Available in: Black

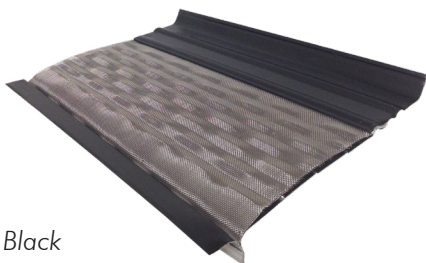
Available in: White (001), Black (004)

STAINLESS STEEL METAL MESH GUTTER GUARD

For areas with fine debris like pine needles, metal mesh gutter guards provide the ultimate in debris protection.

Mesh Guard

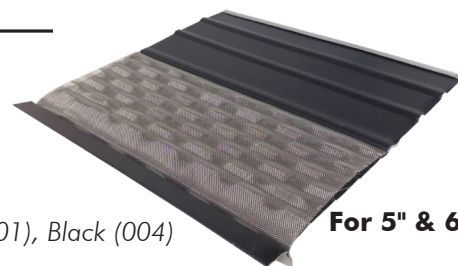
4' pcs, 25 pcs/box
5" - part # 3930050004
6" - part # 3930060004



Available in: Black

Mesh Guard Panel

4' pcs, 25 pcs/box
part # 3931050XXX



Available in: White (001), Black (004)

For 5" & 6"

LOUVERED GUTTER GUARD

Leaf protection that is as easy to install as it is to clean.

E-Z Leaf Sweep

4' pcs, 25 pcs/box
5" - part # 3924050XXX
6" - part # 3924060XXX



Available in: White (001), Black (004)

E-Z Leaf Protection

4' pcs, 25 pcs/box
part # 3925050XXX



For 5" & 6"

SOLID GUTTER GUARD

Solid gutters guards use surface tension to direct water over the front and into the gutter. Unique patent pending gap system protects the gutter without clogging the outlets.

LeafFree

4' pcs, 25 pcs/box
part # 395215XXX



For 5" & 6"

Leaffree High Water Flow

4' pcs, 5 pcs/box
part # 395225XXX



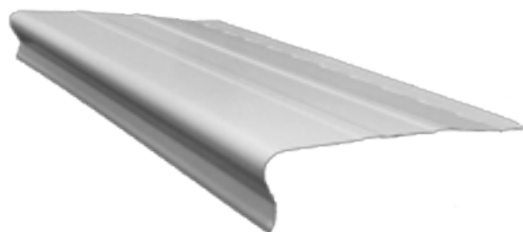
For 5" & 6"

Available in: 30° White (001), Royal Brown (002), Antique Ivory (003), Black (004), Clay (008), Sherwood Green (010), Musket Brown (011), Wicker (013), Almond (015), Linen (017), Light Bronze (018), Tuxedo Gray (019), Heritage Cream (020), Colonial Gray (021), Colonial Red (024), Dark Bronze (025)

*Solid Copper Special Order

Midwest Solid

4' pcs, 25 pcs/box
5" - part # 395015XXX
6" - part # 395016XXX



Available in: 30° White (001), Royal Brown (002), Black (004), Clay (008), Wicker (013), Almond (015), Light Bronze (018), Colonial Gray (021)

SPLASH BLOCKS

Plastic, Slate, 10" x 21"

10 units/box
 Gray - part # 612100014
 Tan - part # 612100017



Concrete, 11" x 18"

80 units/pallet
 Gray - part # 611115014



Concrete, 12" x 12"

100 units/pallet
 Gray - part # 611110014



FLEX-DRAIN® UNDERGROUND DRAINAGE & ADAPTORS

Packaged 1 Unit/Box

FLEX-Drain® 4" x 12' Perforated Pipe

part # 622512004



FLEX-Drain® 4" x 25' Solid Pipe

part # 622516004



FLEX-Drain® 4" Coupler

part # 622520004



FLEX-Drain® 4" Flexible T/Y

part # 622525004



FLEX-Drain® 2" x 3" x 4"

Downspout Adapter

part # 622522004



FLEX-Drain® 3" x 4" x 4"

Downspout Adapter

part # 622524004



Available in: Black

UNIVERSAL DRAINAGE & ADAPTORS

Packaged 1 Unit/Box

2" x 3" DS to 4" Universal

part # 623022004



3" x 4" DS to 4" Universal

part # 623024004



Available in: Black

RIVETS #42 X 1/8"

Packaged 100 Units/Box

A wide selection of colors are available to more effectively blend with Senox gutters.

Aluminum, Painted

part # 521421XXX



Steel, Zinc Plated

part # 521421905



Solid Copper Barrel, Copper Plated Mandrel

part # 521421890



Available in: All Senox colors

#8 SCREWS

1/4" Hex Head, 1/2" 1000 Hour Black Ruspert Coating

100 ct. - part # 511211XXX
1000 ct. - part # 511212XXX



1/4" Hex Head 1/2" Zinc Plated

100 ct. - part # 511211905
1000 ct. - part # 511212905



1/4" Hex Head 1/2" Copper Plated Stainless Steel

100 ct. - part # 511211967



Available in: All Senox colors

SENOX SPEED MASTER® SCREWS

Senox Speed Master® screws are the only ones on the market specifically designed for gutter installation, coated with a long lasting black ruspert finish to better prevent corrosion.

Packaged 250 Units/Bag

#10 x 1 1/2" No Washer, 1000 Hour Black Ruspert Coating

part # 513042904

#10 x 1 1/2" With Washer, 1000 Hour Black Ruspert Coating

part # 513142904

#10 x 2" No Washer, 1000 Hour Black Ruspert Coating

part # 513052904

#10 x 2" With Washer, 1000 Hour Black Ruspert Coating

part # 513152904



Packaged 250 Units/Bag

#10 x 1 1/2" With Washer Stainless Steel

part # 95513144961

#10 x 2" With Washer Stainless Steel

part # 95513154961



NAILS, DRIVE PINS, & ANCHORS

1" Masonry Galvanized Steel

5 lb. - part # 531412910



1 1/2" Masonry Galvanized Steel

5 lb. - part # 531432910



#10 1/4" Plastic Anchor

100 ct. - part # 541210099



TOUCH-UP PAINT

Packaged 12 Units/Box

Brush-On Paint, 0.6 oz.

part # 581006XXX

Available in: 26 Traditional,
1 Duel Tone®, 3 Armor Tough®



Spray-On Paint, 12 oz.

part # 585160XXX

Available in: 26 Traditional, 3 Armor Tough®



SEALANT - NITRILE RUBBER BASE

Packaged 24 Units/Box

Rusco PSCG, 1/10 Gallon

part # 591141014



Rusco PSCG-HV, 1/10 Gallon

part # 591142014



SEALANT - TRIPOLYMER BASE

Packaged 24 Units/Box

Geocel 2320, 1/10 Gallon

part # 593320XXX



Available in: White, Gray, Clear

SEALANT - SBR RUBBER BASE

Packaged 24 Units/Box

OSI GS121, 1/10 Gallon

part # 592121001



Available in: White

AVIATION SNIPS

Max 2000, Left
part # 891M2001



Max 2000, Right
part # 891M2002



Max 2000, Straight
part # 891M2003



OFFSET SNIPS

Max 2000, Left
part # 891M2006



Max 2000, Right
part # 891M2007



REGULAR PATTERN SNIPS

Regular Pattern Snips, 9"
part # 891M9



STRAIGHT SNIPS

Straight Snips, 12"
part # 891M12N
part # 891M12A



Straight Snips, 14"
part # 891M14N
part # 891M14A



CIRCULAR "DUCKBILL" SNIPS

Circular "Duckbill" Snips, 10"
part # 891MD10



Circular "Duckbill" Snips, 12"
part # 891MD12



COMBINATION SNIPS

Combination Snips, 12"
part # 891MC12N
part # 891MC12A



Replacement Blade
part # 891MC12NRB
part # 891MC12ARB

Combination Snips, 14"
part # 891MC14N
part # 891MC14A



Replacement Blade
part # 891MC14NRB
part # 891MC14ARB

END CAP CRIMPERS

Snap Lock Punch
part # 894SL1R



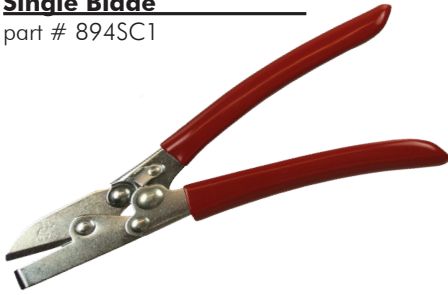
Adjustable Snap Lock Punch
part # 894SL2R



DOWNSPOUT CRIMPERS

Single Blade

part # 894SC1



3-Blade

part # 894SC3R



5-Blade

part # 894C4R



HAND SEAMERS

3"

part # 894S2R



Offset, 3"

part # 894S3R



6"

part # 894S6R



Tool Replacement Spring

part # 8945018



DRIVERS & LEVELING

Magnetic Bit Holder, 1/4"

part # 895MBH14



Nut Driver Extension, 6"

part # 895BHE6



Nut Driver, 1/4"

1 3/4" - part # 895MSH14

2 9/16" - part # 895MSHL14

4" - part # 895MSHML14

Malco 6" - part # 895MSHXL14

8" - part # 895MSHL148



Torpedo Level, 9"

part # 898L9



Hand Riveter, Economy

part # 896CR18



Vampire T-Bar Tool

part # 89717232



Caulking Gun

part # 898CG10



CUTTING & DRILLING

Hole Saw Pilot Bit

part # 892HSB



Hole Saw 2 3/8"

part # 892H38



Hole Saw 2 3/4"

part # 892H44



ProTouch Combi-Saw

part # 892218HP300



12" 32 TPI Hacksaw Blade

part # 89220146V232HE



Saw Blade Lubricant Stick

part # 899LUBS



#30 Double Ended Bit 1/2"

part # 896NDE30



Grease Crayon, White, .43 oz.

part # 899WLB2



LADDER ACCESSORIES

Ladder Max

part # 898162100



Ladder Guards

part # 898165510



Ladder Max Multi-Pro

part # 898162110



MISCELLANEOUS ACCESSORIES

Wasp Spray, 20 oz.

part # 899WASP



Trough Mate

part # 898TM614



Extension Cord, 50', 10 ga.

part # 898ECORD50



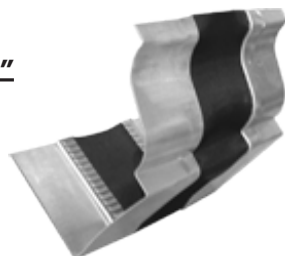
JOINTS

Expansion Joints for K-Style 5", 6"

1 unit/box

5" - part # 293305099

6" - part # 293306099



Available in: Aluminum

RAIN CHAINS

Hammered Cup

Copper

part # 494021890

Available in: Solid Copper



SOLID COPPER

Hammered Cup

Painted Aluminum

part # 494021XXX

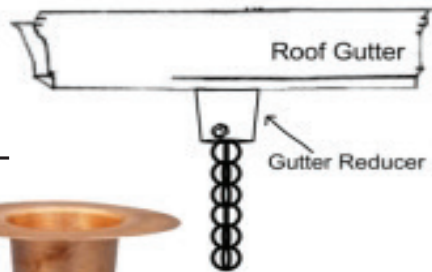
Available: in Black (004), Dark Bronze (025)



BLACK



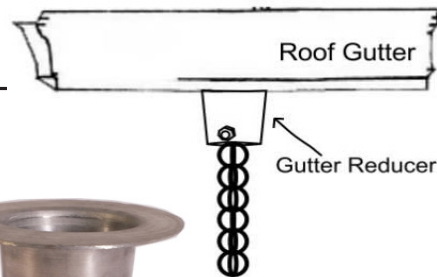
DARK BRONZE



Gutter Reducer Adaptor

Copper

part # 494111890



Gutter Reducer Adaptor

Aluminum

part # 494111000

CONDUCTOR HEADS

Packaged 1 Unit/Box

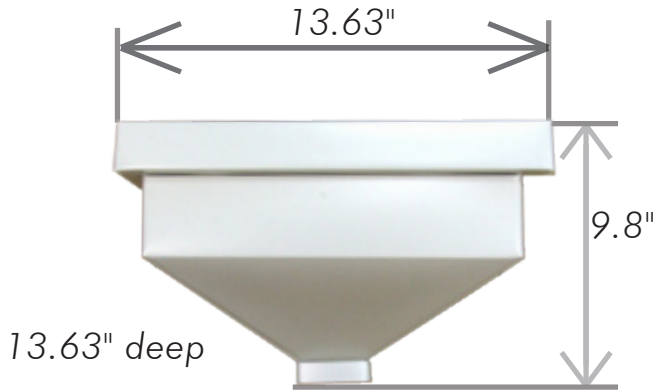
Senox conductor heads are available in a wide variety of sizes and colors, to perfectly finish the job with no modifications needed.

Plain

2" x 3" & 3" x 4" Rectangle Outlet

2" x 3" - part # 441005XXX

3" x 4" - part # 441006XXX



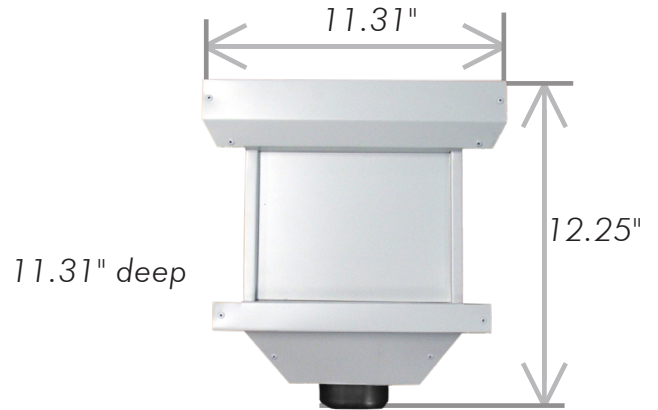
Available in: 30° White (001), 16 oz. Solid Copper (890), 26 ga. Galvalume Plus Steel (920)

Decorative

3" & 4" Oval Outlet

3" - part # 441201XXX

4" - part # 441203XXX



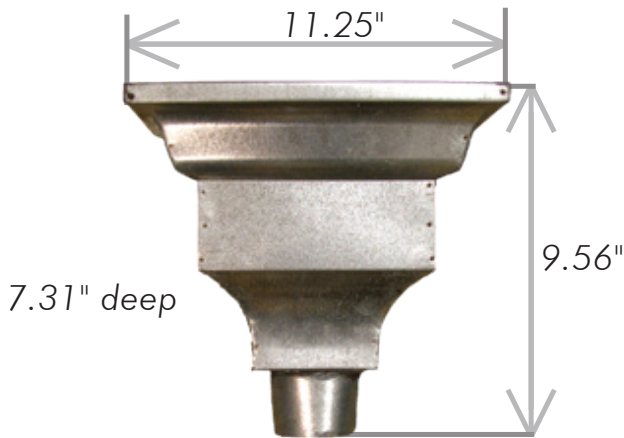
Available in: 26 Traditional, 1 Duel Tone® (129), 3 Armor Tough®, 16 oz. Solid Copper (890), 26 ga. Galvalume Plus Steel (920)

Ornamental

3" & 4" Round Outlet

3" - part # 442008XXX

4" - part # 442009XXX

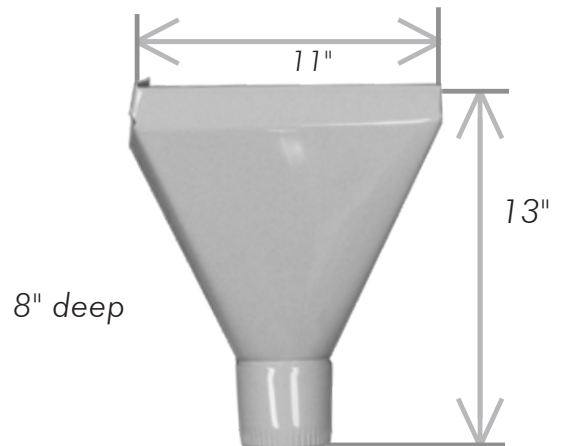


Available in: 16 oz. Solid Copper (890), 26 ga. Galv Steel (920)

Basic

4" Round Outlet

part # 441603001



Available in: 30° White

SENOX BARRACUDA® GUTTER MACHINES

A quality gutter machine is the cornerstone of all successful gutter businesses, and it is incredibly important to make sure you have a reliable machine that will do exactly what you need to satisfy your customers.

Contact your Senox representative before purchasing to help match you with the perfect machine for you.

5" K-Style

6' 9" x 2' x 4'
part # 81112001501

6" K-Style

9' x 2' x 4'
part # 81112001601

7" K-Style

12' 7" x 2' x 4'
part # 81112001701

5"/6" Combo K-Style

9' x 2' x 4'
part # 81112001511

6"/7" Combo K-Style

12' 7" x 2' x 4'
part # 81112001621

6" Reverse Bead Half Round

14' x 2' x 4'
part # 81112016601



*Cradle not included with base machine

SENOX BARRACUDA® GUTTER MACHINE OPTIONS

Everything you need to get the most out of your Barracuda® gutter machine.

Front Pull Guillotine

5" & 5"/6" Combo
part # 8111300151

6" & 5"/6" Combo
part # 8111300161

6" & 6"/7" Combo
part # 8111300162

7" & 6"/7" Combo
part # 8111300172

6" Half Round
part # 8111301660



End Plate (No Shear)

5" & 6" & 5"/6" Combo
part # 8111350151

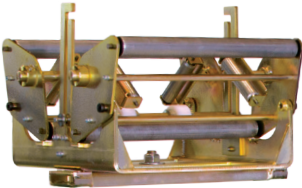
7" & 6"/7" Combo
part # 8111350172



Full Coil Cradle Machine Mount

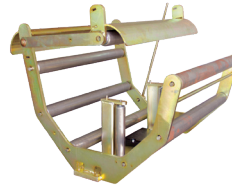
5" & 6" | 5"/6" Combo | 6"HR
part # 811140151

7" | 6"/7" Combo
part # 811140172



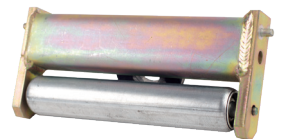
Spin Coil Cradle Machine Mount

w/Single Scuff Bar & Side Roller Assembly
part # 811145151



Side Roller Assembly For Cradle

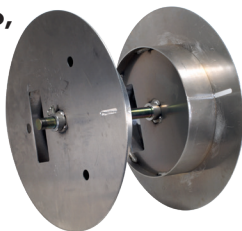
part # 81904505



Spool w/ Shaft

5" & 6" & 5"/6" Combo, 6" HR
part # 811160151

7" & 6"/7" Combo
part # 811160172



Upright Turnstile

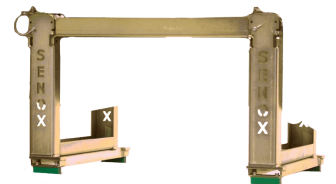
5" & 6" | 5"/6" Combo | 6"HR
part # 811150151

7" & 6"/7" Combo
part # 811150172



Transfer Bar Set

Fits All Sizes
part # 811165001



Standard Run Out Stand w/ Adjustable Leg

5" & 6" & 5"/6" Combo, 6" HR
part # 811180100

7" & 6"/7" Combo
part # 811180107



Deluxe Run Out Stand w/ Adjustable Leg

5" & 6" & 5"/6" Combo, 6" HR
part # 811180130



Machine Stand Riser Pad, Tall

Fits All Machines
part # 811190001



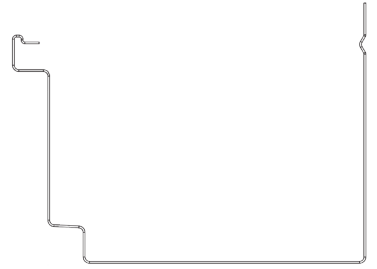


6" Boxer

(base machine w/ dongle & rib roller)
part # 8180160251

6" Boxer

Depth: 162"
Width: 24"
Length: 139"
Weight: 1200 lbs (base machine)



Boxer Front Pull Guillotine

6" Boxer

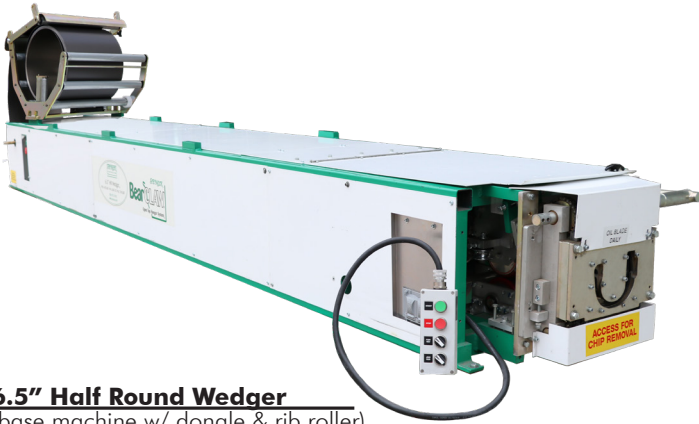
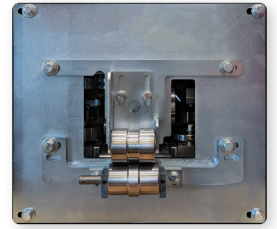
part # 8180300261



Boxer End Plate (No Shear)

6" Boxer

part # 8180350261

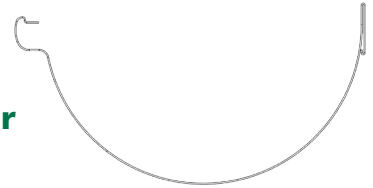


6.5" Half Round Wedger

(base machine w/ dongle & rib roller)
part # 8180202660

6.5 Half Round Wedger

Depth: 19"
Width: 24"
Length: 161"
Weight: 1574 lbs (base machine)



AQUEDUCT HANGERS

For 6" and 6.5"

25 pcs/box
Screen Hanger, 6" x 4' - part # 3540060XXX
Screen Hanger, 6.5" x 4' - part # 3540650XXX

BEARCLAW HANGERS

For 6" and 6.5" HR

100 pcs/box - Aluminum
6", no clip, with screw - part # 3455601099
6.5" HR, with screw - part # 3455651099

AQUEDUCT MITERS

For 6" and 6.5"

20 pcs/box
Strip, 6", 90°, O/S & I/S- part # 334311961
Strip, 6.5", 90°, O/S & I/S- part # 334511961
Bay, 6", 45° O/S & I/S- part # 334331961
Bay, 6.5", 45° O/S & I/S- part # 334531961

BEARCLAW GUTTER GUARD

For 5", 6", and 6.5"

25 pcs/box
BearCLAW Expanded 6" x 4'- part # 383106XXX
BearCLAW Expanded 6.5" x 4' HR-part # 383166XXX

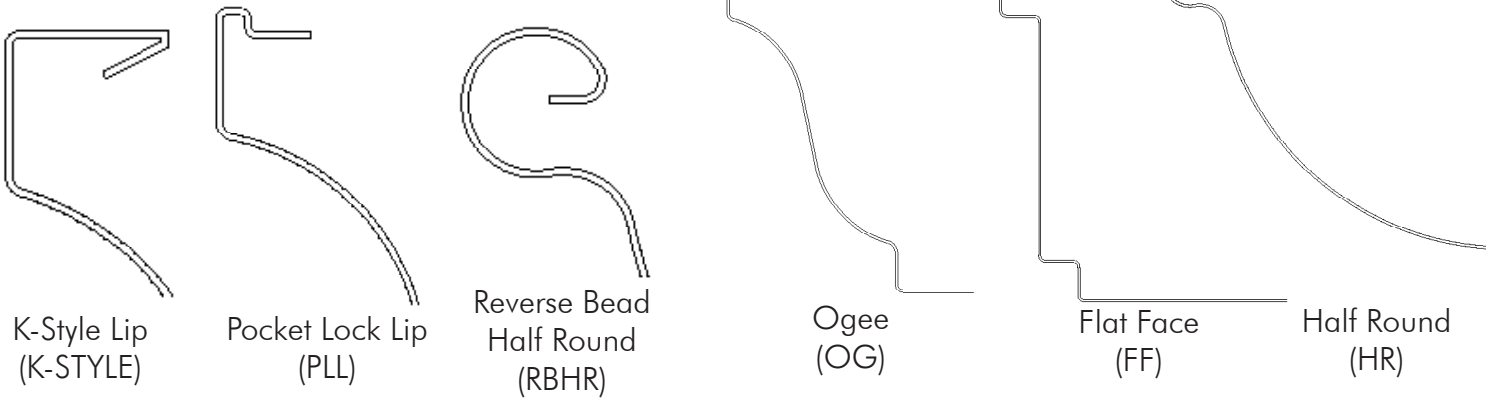


Available In:
6" Boxer
6.5" Half Round Wedger

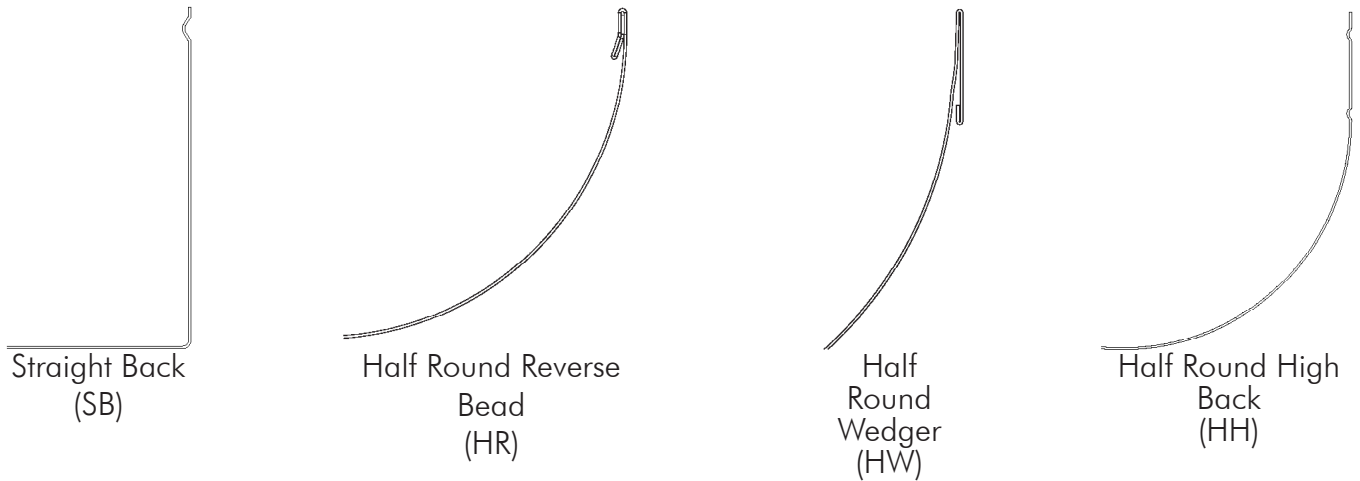


1. The front lip and associated hangers are available in K-Style (K-STYLE), Pocket Lock Lip (PLL), and Reverse Bead Half Round (RBHR).

2. The face and bottom are available in OG (OG), Flat Face (FF), and Half Round (HR).



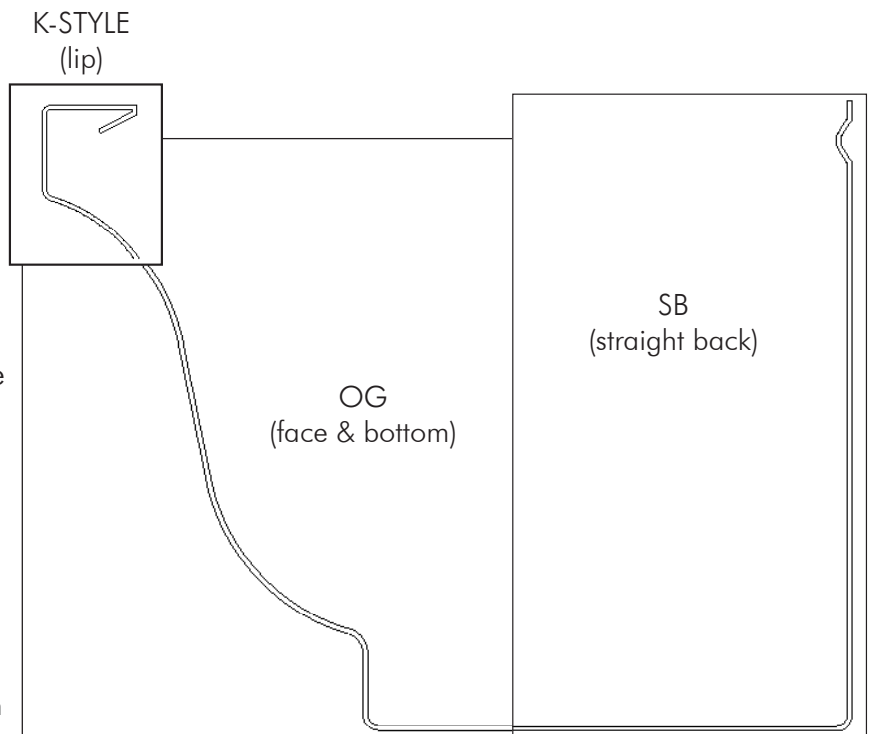
3. The back and gutter bumpers are available in Straight Back (SB), Straight Back High/Low (SBHL), Half Round Reverse Bead (HR), Half Round Wedger (HW), and Half Round High Back (HH).



4. Gutterguards are available in K-Style, BearCLAW, AqueDUCT, and LeafLID.

The major discrepancy in everyone's mind is centered around OG vs. K-Style. Our opinion is OG speaks to the shape of the gutter face. This shape has been around since the Greeks. K-Style describes the hanger style and front lip design on the top of the OG shape. Over time the K-Style front lip and the OG shape have become synonymous in people's minds. Because of the new styles of front lips and hangers, this thinking needs to be separated to allow us to describe them separately. Our additional designs for the back of the gutter also call for more precise definitions.

—A.B. Walters
President



A

Accessories, Downspout	8
Accessories, Ladder	21
Accessories, Miscellaneous	21
Adaptors, Underground Drainage	16
Anchors, Nails, & Drive Pins	17
Aviation Snips	19

B

Bar w/ Rod for 6"	13
Barracuda Gutter Machines, Senox	24
Barracuda Gutter Machine Options, Senox	24
Black MAX Punch Pak Flat Bottom Gutter	5
Black MAX Mini Punch Pak Flat Bottom Gutter	5
Black MAX Mini Punch Pak Half Round	13
Black MAX Punch Replacement Accessories	5
Blade, Hacksaw	21
Bracket, 6" Cast	23
Bolt w/ Nut	12

C

Cast Bracket, 6"	23
Caulking, Drivers, & Leveling	20
Circular "Duckbill" Snips	19
Coil, Seamless Gutter	4
Combination Snips	19
Combi-Saw	21
Conductor Heads	23
Copper Flat Sheets, Solid	6
Crimpers, Downspout	20
Crimpers, End Cap	20
Cutting & Drilling	21

D

Downspout Accessories	9
Downspout Crimpers	20
Downspout Hangers	9
Downspouts, Rectangular	7
Downspouts, Round	8
Drainage & Adaptors	16
Drilling & Cutting	21
Drip Cap	6
Drip Edge	6
Drive Pins, Anchors, & Nails	17
Drivers, Leveling, & Caulking	20
Duckbill Snips, Circular	19

E

Elbows, Rectangular	7
Elbows, Round	8
End Cap Crimpers	19
End Caps for Half Round	13
End Caps for K-Style	4
Expansion Joints for K-Style	21
Extension Cord	21
External Hangers, Half Round	12

F

Flashing	6
Flat Sheets, Solid Copper	6
FLEX-Drain Underground Drainage & Adaptors	16

G

Grease Crayon	21
Gutter Bumper HR	13
Gutter Bumper SB	6
Gutter Coil, Seamless	4
Gutter Guard, Aluminum Expanded Wire	14
Gutter Guard, Louvered	15
Gutter Guard, Perforated	14
Gutter Guard, Powder Coated Expanded Wire	14
Gutter Guard, Solid	15
Gutter Guard, Stainless Steel Metal Mesh	15
Gutter Machine Options, Senox Barracuda	24
Gutter Machines, Senox Barracuda	24
Gutter Machines, Senox Licensed Products	25
Gutter Sections, Reverse Bead Half Round	13
Gutter Wedges for Reverse Bead Half Round	13

H

Hacksaw Blade	21
Half Round External Hangers	12
Half Round Gutter Sections, Reverse Bead	13
Half Round Internal Hangers, Reverse Bead	12
Half Round Miters	13
Half Round Outlets	13
Hand Riveters	20
Hand Seamers	20
Hangers, Downspout	9
Hangers, K-Style Internal	10-11
Hangers, Reverse Bead Half Round Internal	12
Hangers, Half Round External	12
Hole Saw 1 1/2", for Punch	5
Hole Saw	21

I

Internal Hangers, Reverse Bead Half Round	12
Internal Hangers, K-Style	10-11

J

Joints	21
--------------	----

K

K-Style Internal Hangers	10-11
--------------------------------	-------

L

Ladder Accessories	21
Leveling, Caulking, & Drivers	20
Licensed Products, Gutter Machines	25
Lubricant, Saw Blade	21

M

Mini Punch Pak Flat Bottom Gutter, Black Max	5
Mini Punch Pak Half Round, Black Max	13
Miscellaneous Accessories	21
Miters for Half Round	13
Miters for K-Style	4

N

Nails, Drive Pins, & Anchors	13
------------------------------------	----

O

Offsets, Rectangular	7
Offsets, Round	8
Offset Snips	19
OSI Sealant	18
Outlets for Flat Bottom Gutter	5
Outlets for Half Round	13

P

Paint, Touch-Up	18
Pipe Bands, Downspout Hangers	9
Punch Pak Flat Bottom Gutter, Black MAX	5
Punch Pak Flat Bottom Gutter, Black MAX Mini	5
Punch Pak Half Round, Black MAX Mini	13
Punch Replacement Accessories, Black MAX	5

R

Rain Chains	22
Rectangular Downspouts	7
Rectangular Elbows	7
Rectangular Offsets	7
Regular Pattern Snips	19
Reverse Bead Half Round Gutter Sections	13
Reverse Bead Half Round Internal Hangers	12
Rivets, #42 x 1/8"	17
Round Downspouts	8
Round Elbows	8
Round Offsets	8
Ruscoe Sealants	18

S

Saw Blade Lubricant	21
Screws, #8	17
Screws, SpeedMaster®	17
Sealant, Nitrile Rubber Base	18
Sealant, SBR Rubber Base	18
Sealant, Tripolymer Base	18
Seamers, Hand	20
Seamless Gutter Coil	4
Snips	19
Solid Copper Flat Sheets	6
Splash Blocks	16
Straight Snips	19
Stamped Bracket, 5800 Series	12

T

Touch-Up Paint	18
T-Strap, 9000 Series	11
Torpedo Level	20
Trough Mate	21

U

Underground Drainage & Adaptors	16
---------------------------------------	----

W

Wedges for Reverse Bead Half Round, Gutter	13
Wrap Around w/Strap	13



Serving the Seamless Gutter Industry Since 1972

15409 Long Vista Drive
Austin, TX 78728

Phone: 866-522-1696
Fax: 800-295-2702

www.senox.com
senoxinfo@senox.com